

MARTIN CENTER ROOF REPLACEMENT

120 BROAD STREET, NEW LONDON, CONNECTICUT 06320



ADDENDUM #2 AUGUST 7, 2015

ARCHITECT



CHRISTOPHER WILLIAMS ARCHITECTS, LLC
88 Willow Street New Haven, CT 06511
203 776 0184 cwilliams@cwarchitects.com

STRUCTURAL ENGINEER



Morrissey Engineering, LLC
58 Essex Street
Deep River, CT 06417
860-582-0312

MEP ENGINEER



Hallam/ICS
575 West Street, Suite 220
Mansfield, MA 02048
Tel: 508.821.9739 Fax: 508.821.9739

ROOFING CONSULTANT



M A CAPUTO ASSOCIATES, LLC
1008 Quinpiac Avenue
New Haven, CT 06513
(203) 469-3216

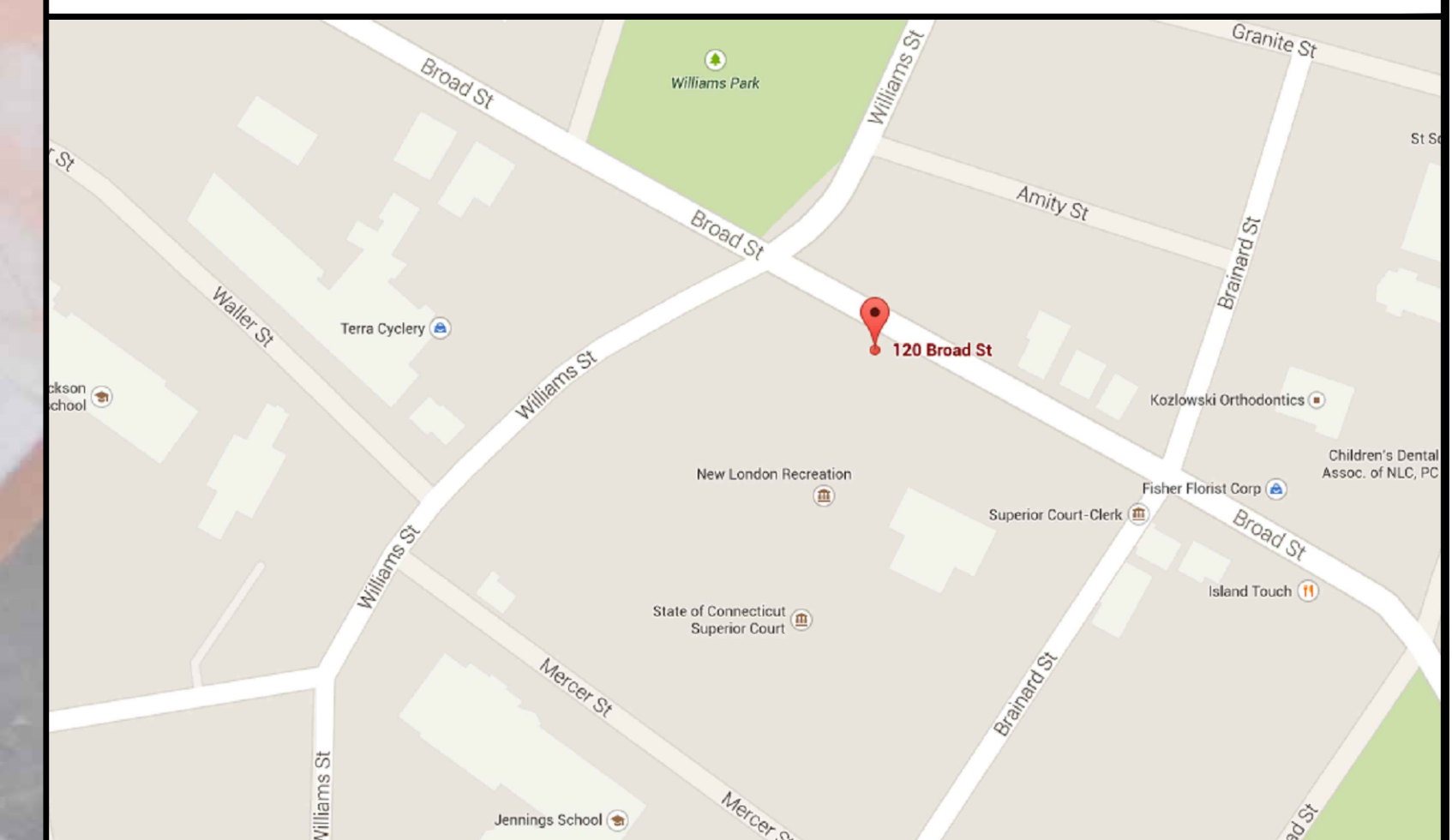
SHEET INDEX

DISCIPLINE	SERIES	SHEET NUMBER	SHEET TITLE	ISSUE DATE				
				1	2	3	4	5
			1. DESIGN DEVELOPMENT 2. FOR CONSTRUCTION SET 3. ADDENDUM #1 4. ADDENDUM #2					
				11/19/2014	7/22/2015	7/29/2015	8/17/2015	
GENERAL	GENERAL		COVER SHEET	•	•	•	•	
		G001	ABBREVIATIONS AND GRAPHIC SYMBOLS	•	•	•		
	SITE	C101	BUILDING SITE PLAN	•	•	•		
ARCHITECTURAL	PLANS	A101	SENIOR CENTER FLOOR PLAN & RCP	•	•	•		
		A102	ROOF PLAN & DEMOLITION PLAN	•	•	•		
	ELEVATIONS	A200	EXTERIOR ELEVATIONS	•	•	•		
	DETAILS	A501	THERMOPLASTIC ROOF DETAILS	•	•	•		
		A502	GATE DETAILS	•	•			
MECHANICAL, ELECTRICAL, PLUMBING	PLANS	MEP101	SENIOR CENTER MEP PLAN	•	•	•		

GENERAL NOTES

- The intent of the Contract Documents is to include all items necessary for the proper execution and completion of all Work by the Contractor. The Contract Documents are complementary, and what is required by one shall be as binding as if required by all. Where a conflict within the Contract Documents exists, the Contractor shall provide the better quality or greater quantity of work in accordance with the Architect's resolution without any increase in the Contract sum. Organization of the Specifications into divisions, sections and articles, and arrangement of sheets shall not control the Contractor in dividing the work among subcontractors, or in establishing the extent of Work to be performed by any trade.
- REFERENCE KEY NOTES and SHEET KEY NOTES are intended to indicate and clarify the extent and requirements of the Work. They do not indicate every location or occurrence of required Work. The lack of a key note to an individual item of Work will not relieve the Contractor of responsibility to execute that Work as part of the Contract when the requirement for that Work is logically inferred by other parts of the Contract Documents.
- EACH AND EVERY SUBCONTRACTOR shall be bound by the entire set of contract documents, which include the plans, specifications, supplemental conditions, addenda, etc. Regardless of each particular contractor's trade, scope of work, area of expertise, contractual obligations, past experience, etc., they shall be bound by the entire set of contract documents.
- EACH AND EVERY SUBCONTRACTOR shall maintain a full set of the most up-to-date plans and specifications ON THE JOBSITE throughout the construction period.
- Refer to the Architectural drawings for exact locations and coordination requirements. The architectural drawings control dimensional placement and positioning of EVERYTHING. Any conflicts or inconsistencies including those with existing conditions shall be brought to the attention of the Architect for resolution.
- Refer to MEP Drawings for additional demolition, removal, cutting and patching requirements. Field verify mechanical, plumbing or electrical work requiring cutting and patching of architectural elements including (but not limited to) partitions, ceilings, casework and finishes. Provide all cutting, patching and/or replacement to provide a concealed installation.
- All work, including MEP and structural work shall be coordinated with the existing building structure, MEP systems and architectural elements. Each subcontractor shall inspect existing conditions before finalizing their bid. It shall be assumed that they viewed all visible and semi-visible (including above suspended acoustical type ceilings, behind access panels, inside mechanical and electrical rooms). Unless access limitations are so noted in their bids, requests for related additional costs (i.e. change orders) will not be considered.
- Not every single existing element, device, fixture, etc. is shown on the drawings. Any existing item not graphically depicted, annotated and/or not specified to be removed, relocated or to remain on the drawings shall be construed to remain unless it falls under the conditions addressed under item 3 above. Any removal, reinstallation (including minor relocation) and/or minor modifications shall be included in the cost of the Work and not considered additional Work.
- Field verify all dimensions and conditions, particularly prior to the creation and submission of shop drawings. While the drawings are graphically drawn to scale, do not scale drawings for any critical dimensional information. Use calculated and field verified dimensions.
- All corners are 90 degrees unless otherwise noted or dimensioned.
- All wiring in finished areas shall be concealed unless otherwise noted.

LOCATION MAP



STANDARD ARCHITECTURAL ABBREVIATIONS			
A/C	Amphiphilic	CSMT	Cosmet
AAF	Alarm Annunciator Panel	CT	Connecticut
AB	Anchor Bolt	CTSTN	Cut Stone
ABRSV	Abrasive	CTD	Center, Contour
ACC	Asphaltic Concrete, Accessible	CU	Copper, Cubic
ACS DR	Access Door	CUB	Cubic
ACS PNL	Access Panel	CUR	Curtain
ACSR	Aluminum Cable Reinforced	CW	Clockwise, Cold Water
ACT	Acoustic	CY	Cubic Yard
ACTS	Acoustical Ceiling Tile	D	Deep
AD	Area Drain	DAP	Deep Access Panel
ADC	Automatic Door Closer	DB	Double
ADDJ	Additional	DC	Direct Current
ADJ	Adjustable, Adjacent	DEG	Degree
AF	Above Finished	DEM	Demolish, Demolition
AFS	Above Finished Slab	DEPT	Department
AH	Air Handling Unit	DIA	Diameter
AIR	Air	DIAG	Diagonal
ALT	Alternate	DIM	Dimension
ALUM	Aluminum	DIFF	Diffuser
ANOD	Anodize	DM	Dimension
ANT	Antenna	DISC	Disconnect
APPROX	Approximate	DISP	Dispenser
APT	Apartment	DJ	Double Joint
ARCH	Architectural	DMF	Damp Proofing
ARF	Architectural Finish	DN	Down
ASPH	Asphalt	DOM	Domestic
ATICH	Attachment	DR	Dring Room, Door, Drain
AUTO	Automatic	DRCL	Door Closure
AV	Audio/Visual	DRFR	Door Frame
AW	Average	DRLO	Door Louver
AWN	Awning	DRSL	Door Slab
AWT	Acoustical Wall Treatment	DRSL	Door Slab
B	Bottom of	DRSL	Door Slab
BA	Bright Anemoid	DRSL	Door Slab
BAL	Balloon	DRSL	Door Slab
BALC	Balcony	DRSL	Door Slab
BAT	Bathtub	DRSL	Door Slab
BB	Baseboard, Bulletin Board	DRSL	Door Slab
BBR	Baseboard Radiator	DRSL	Door Slab
BC	Board	DRSL	Door Slab
BCB	Board	DRSL	Door Slab
BCY	Boundary	DRSL	Door Slab
BE	Bevel	DRSL	Door Slab
BEV	Both Faces, Bottom Face	DRSL	Door Slab
BFF	Biluminous	DRSL	Door Slab
BITUM	Bituminous	DRSL	Door Slab
BKBD	Bookcase	DRSL	Door Slab
BL	Baseline, Building Line	DRSL	Door Slab
BLD	Building	DRSL	Door Slab
BLDR	Bolster	DRSL	Door Slab
BLT	Borrowed Light	DRSL	Door Slab
BLM	Beam, Benchmark	DRSL	Door Slab
BOS	Bottom of Steel	DRSL	Door Slab
BT	Bedroom	DRSL	Door Slab
BRD	Bridging	DRSL	Door Slab
BRG	Bearing	DRSL	Door Slab
BRP	Burip	DRSL	Door Slab
BRZ	Brize	DRSL	Door Slab
BS	Both Sides	DRSL	Door Slab
BST	Basement	DRSL	Door Slab
BT	Both	DRSL	Door Slab
BTWN	Between	DRSL	Door Slab
BU	Built-up	DRSL	Door Slab
BUR	Built-up Roofing	DRSL	Door Slab
BW	Both Ways	DRSL	Door Slab
C	Channel	DRSL	Door Slab
C to C	Center to Center	DRSL	Door Slab
C&P	Carpet and Pad	DRSL	Door Slab
CAB	Cabinet	DRSL	Door Slab
CAN	Canopy	DRSL	Door Slab
CANTIL	Cantelever	DRSL	Door Slab
CATW	Catwalk	DRSL	Door Slab
CAV	Cavity	DRSL	Door Slab
CB	Catch Basin	DRSL	Door Slab
CCB	Cementitious (Backer) Board	DRSL	Door Slab
CCTV	Closed Circuit Television	DRSL	Door Slab
CCW	Counterclockwise	DRSL	Door Slab
CER	Ceramic	DRSL	Door Slab
CF	Cubic Foot	DRSL	Door Slab
CFG	Counterflashing	DRSL	Door Slab
CG	Corner Guard	DRSL	Door Slab
CHBD	Chalk Board	DRSL	Door Slab
CHFR	Chamber	DRSL	Door Slab
CHMR	Cast Iron, Cubic Inch	DRSL	Door Slab
CR	Circular	DRSL	Door Slab
CRP	Cast Iron S&P Pipe	DRSL	Door Slab
C&J	Chalkboard	DRSL	Door Slab
CL	Centerline	DRSL	Door Slab
CLG	Centerline	DRSL	Door Slab
CLL	Contract Limit Line	DRSL	Door Slab
CLR	Clearance	DRSL	Door Slab
CLM	Classroom	DRSL	Door Slab
CLT	Cleat	DRSL	Door Slab
CONSTR	Construction	DRSL	Door Slab
CONT	Continuous, Continue	DRSL	Door Slab
CONTR	Contract, Contractor	DRSL	Door Slab
COORD	Coordinate	DRSL	Door Slab
CP	Coping	DRSL	Door Slab
CORR	Corridor, Correct	DRSL	Door Slab
COV	Cover	DRSL	Door Slab
COVPL	Cover Plate	DRSL	Door Slab
CPBS	Compressible	DRSL	Door Slab
CP	Carpet	DRSL	Door Slab
CPVC	Chlorinated Polyvinyl Chloride	DRSL	Door Slab
CRUMF	Crumf	DRSL	Door Slab
CN	Crew	DRSL	Door Slab
CRS	Cold Rolled Steel	DRSL	Door Slab
CS	Cast Stone	DRSL	Door Slab
CSB	Concrete Splashblock	DRSL	Door Slab
CSG	Casing	DRSL	Door Slab
CSK	Countersink	DRSL	Door Slab

GRAPHIC SYMBOLS ELECTRONIC SAFETY AND SECURITY

ELECTRONIC DETECTION AND ALARM					
FAC	ALARM - FIRE COMMUNICATOR	FTR	ALARM - TRANSPONDER OR TRANSMITTER	HD	DETECTOR - HEAT, RATE OF RISE
FACP	ALARM - FIRE CONTROL PANEL	VA	ALARM - VOICE COMMUNICATION PANEL	HR	DETECTOR - HEAT, RATE OF RISE
F	ALARM - FIRE, MANUAL PULL STATION	DS	DETECTION SWITCH - DETECT	IR	DETECTOR - IONIZATION AND HEAT SMOKE
G	ALARM - GONG	V	DETECTION SWITCH - VALVE TAMPER	IP	DETECTOR - IONIZATION AND PHOTOELECTRIC SMOKE
H	ALARM - HORN STROBE	G	DETECTION - GAS	I	DETECTOR - IONIZATION SMOKE
SS	SPEAKER STROBE	SCPP	DETECTION - SMOKE ALARM AND PRESSURE PANEL	IPh	DETECTOR - IONIZATION, PHOTOELECTRIC AND HEAT SMOKE
AL	ALARM - HORN	EH	ALARM - ELECTROMAGNETIC ROBO HOLDER	Ph	DETECTOR - PHOTOELECTRIC AND HEAT SMOKE
AS	ALARM - STROBE	F	DETECTOR - FLAME FLOKER	P	DETECTOR - PHOTOELECTRIC SMOKE
M	ALARM - MANUAL CONTROL	H	DETECTOR - HEAT	S	DETECTOR - SMOKE
MFA	ALARM - MASTER CONTROL PANEL	H	DETECTOR - HEAT SMOKE	S	DETECTOR - SMOKE, FOR DUCT
W	ALARM - SPRINKLER SYSTEM WATER FLOW BELL	H	DETECTOR - HEAT COMBINATION	S	DETECTOR - SMOKE, FOR DUCT
T	ALARM - TAMPER SWITCH	H	DETECTOR - HEAT FIXED TEMPERATURE	FA	FIRE ALARM ANNUNCIATOR PANEL

GRAPHIC SYMBOLS SITE

x(0.00)	EXISTING SPOT ELEVATION	GC	GRIT CHAMBER	SS	SANITARY PRESSURE VESSEL
x 0.00	SPOT ELEVATION	G	GAS METER	S	SANITARY VALVE VAULT
x BC 0.00	SPOT ELEVATION, BOTTOM OF CURB	G	NATURAL GAS MANHOLE	ST	SEPTIC TANK
x BS 0.00	SPOT ELEVATION, BOTTOM OF STEPS	G	GAS RECEIVER	O	STEAM PIT
x BW 0.00	BOTTOM OF WALL	G	GAS TRAP	T	TIDE GAGE
x FF 0.00	SPOT ELEVATION, TOP OF FINISH FLOOR	G	GAS VALVE VAULT	T	TIRE TREDDLE
x MEG	MATCH EXISTING GRADE	H	HANDICAP SYMBOL	T	TANK (BELOW GROUND)
x TC 0.00	SPOT ELEVATION, TOP OF CURB	H	HORIZONTAL CONTROL POINT	T	TANK (HORIZONTAL ABOVE GROUND)
x TS 0.00	SPOT ELEVATION, TOP OF STEPS	H	HORIZONTAL VERTICAL CONTROL POINT	T	TANK (VERTICAL ABOVE GROUND)
x TW 0.00	SPOT ELEVATION, TOP OF WALL	H	HYDRANT	T	TRAFFIC ARM WITH CARD READER
P	PARKING TURNING ARROW	I	INTERSTATE HIGHWAY SYMBOL	T	TRAFFIC ARM MECHANICAL SWING
S	STRAIGHT DIRECTION ARROW	I	US HIGHWAY SYMBOL	T	STATE HIGHWAY SYMBOL
ST	STRAIGHT AND TURN ARROW	I	STATE HIGHWAY SYMBOL	T	STATE HIGHWAY SYMBOL
CB	CATCH BASIN	M	MONITORING WELL	W	WATER HANDHOLE
CB	ROUND CATCH BASIN	P	PHOTO CONTROL POINT	W	WATER METER
CO	SANITARY CLEANOUT	P	POST INDICATOR VALVE	WS	WATER SOFTENER
CD	CORE DRILL HOLE DRILLED	P	PUMP STATION	W	WATER VALVE VAULT
CD	CORE DRILL HOLE UNDRILLED	R	REGULATOR VALVE	I	INDUSTRIAL WASTE WATER METER
D	STORM DRAINAGE MANHOLE	R	RAIL SIGNAL	I	INDUSTRIAL WASTE WATER MANHOLE
F	FUEL OIL METER	D	STORM DRAINAGE MANHOLE	L	LIGHT POLE
F	FUEL OIL MANHOLE	S	SIGN	U	UTILITY POLE
F	FUEL OIL VAULT	S	SANITARY MANHOLE	P	PARKING METER
GT	GREASE TRAP	S	SANITARY METER		

GRAPHIC SYMBOLS FIRE SUPPRESSION

CU	SECURITY ACCESS CONTROL UNIT	F	FIRE SUPPRESSION, PENDANT HEAD SPRINKLER	F	FIRE SUPPRESSION, SPRINKLER HEAD, SIDEWALL PENDANT
A	FIRE SUPPRESSION, FIRE DEPARTMENT KEY BOX	F	FIRE SUPPRESSION, HYDRANT, PRIVATE HOUSED TWO-HOSE OUTLET	F	FIRE SUPPRESSION, SPRINKLER HEAD, SIDEWALL UPRIGHT
B	FIRE SUPPRESSION, SPRINKLER BRANCH HEADS	F	FIRE SUPPRESSION, FIRE DEPARTMENT CONNECTION, ONE-WAY	F	FIRE SUPPRESSION, EXTINGUISHER, DRY CHEMICAL, BC TYPE
C	FIRE SUPPRESSION, SPRINKLER HEAD WITH GUARD	F	FIRE SUPPRESSION, FIRE DEPARTMENT CONNECTION, TWO-WAY SHAMSE	F	FIRE SUPPRESSION, EXTINGUISHER, DRY CHEMICAL, ABC TYPE
D	FIRE SUPPRESSION, NIPPLED UP UPRIGHT SPRINKLER	F	FIRE SUPPRESSION, FIRE HOSE CABINET OR CONNECTION	F	FIRE SUPPRESSION, CO2 EXTINGUISHER
E	FIRE SUPPRESSION, NOZZLE, SPECIAL SPRAY	F	FIRE SUPPRESSION, STANDPIPE, DRY HOSE STATION	F	FOAM EXTINGUISHER
F	FIRE SUPPRESSION, OUTSIDE SPRINKLER	F	FIRE SUPPRESSION, STANDPIPE, HOSE CABINET CHARGED		

GRAPHIC SYMBOLS ELECTRICAL

POWER AND CIRCUITING

D	DISTRIBUTION PANEL	T	TRANSFORMER	F	FULL BOX
P	POWER PANEL	J	JUNCTION BOX	M	ELECTRICAL METER
L	LIGHTING PANEL	J	JUNCTION BOX, WALL MOUNTED		

ELECTRICAL DEVICES

S	SWITCH, SINGLE POLE	D	DISCONNECT SWITCH, UNFUSED	R	RECEPTACLE, SPECIAL PURPOSE SIMPLEX
S	SWITCH, 3-WAY	S	STARTER OR MOTOR CONTROLLER	R	RECEPTACLE, SPECIAL PURPOSE DUPLEX
S	SWITCH, 3-WAY DIMMER	S	STARTER COMBINATION WITH DISCONNECT SWITCH	R	RECEPTACLE, RECESSED
S	SWITCH, 4-WAY	S	OCCUPANCY SENSOR, CEILING MOUNTED	R	RECEPTACLE, FLOOR MOUNTED SIMPLEX
S	SWITCH, SINGLE POLE DIMMER	S	OCCUPANCY SENSOR, WALL MOUNTED	R	RECEPTACLE, FLOOR MOUNTED DUPLEX
S	SWITCH, CALL FOR AID	R	RECEPTACLE, DUPLEX	R	SPECIAL PURPOSE RECEPTACLE, FLOOR MOUNTED
S	SWITCH, SINGLE POLE JAMB MOUNTED	R	RECEPTACLE, DUPLEX SPLIT WIRED	R	POWER AND TELEDATA COMBINATION, FLOOR MOUNTED
S	SWITCH, SINGLE POLE KEYPAD	R	RECEPTACLE, DUPLEX ON EMERGENCY POWER CIRCUIT	R	RECEPTACLE, CASWORK/COUNTER/FURNISHINGS MOUNTED
S	SWITCH, LOW VOLTAGE MASTER	R	RECEPTACLE, SIMPLEX WEATHERPROOF	R	POWER AND TELEDATA COMBINATION, CASWORK/COUNTER/FURNISHINGS MOUNTED
S	SWITCH, SINGLE POLE WITH PILOT LIGHT	R	RECEPTACLE, DUPLEX WEATHERPROOF	R	RECEPTACLE, CEILING MOUNTED SIMPLEX
S	SWITCH, SINGLE POLE TIMER OPERATED	R	DUPLEX RECEPTACLE, GROUND FAULT INTERRUPTER CIRCUIT	R	RECEPTACLE, CEILING MOUNTED DUPLEX
D	DISCONNECT SWITCH, FUSED	R	QUADRUPLEX RECEPTACLE	D	"CALL FOR AID" LIGHT

LIGHTING

L	LUMINAIRE, CEILING RECESSED	L	LUMINAIRE, EXTERIOR WALL SURFACE MOUNTING	L	LUMINAIRE, CEILING SURFACE MOUNTED FLUORESCENT actual size shown on plan
L	LUMINAIRE, CEILING SURFACE RECESSED	L	LUMINAIRE, EXTERIOR WALL SURFACE MOUNTING - ELEVATION	L	LUMINAIRE, CEILING SURFACE MOUNTED FLUORESCENT actual size shown on plan
L	LUMINAIRE, CASEWORK/MIDLEVEL MOUNTED UP OR DOWN LIGHT	L	LUMINAIRE, EMERGENCY LIGHT	L	LUMINAIRE, CEILING PENDANT MOUNTED, actual size and shape shown on plan
L	LUMINAIRE, CEILING SURFACE UTILITY	L	LUMINAIRE, CEILING PENDANT MOUNTED, actual size and shape shown on plan	L	LUMINAIRE, UNDERCABINET/SHELF MOUNTED, actual size shown on plan
L	LUMINAIRE, WALL SURFACE MOUNTING	L	LUMINAIRE, CEILING PENDANT MOUNTED, actual size and shape shown on plan	L	TRACK LIGHTING, TRACK MOUNTED DIRECTLY TO CEILING OR WALL
L	LUMINAIRE, CEILING SURFACE UTILITY	L	LUMINAIRE, CEILING PENDANT MOUNTED, actual size and shape shown on plan	L	TRACK LIGHTING, TRACK MOUNTED DIRECTLY TO CEILING OR WALL

GRAPHIC SYMBOLS ELECTRONIC SAFETY AND SECURITY

ELECTRONIC ACCESS CONTROL AND INTRUSION DETECTION

CU	SECURITY ACCESS CONTROL UNIT	MSI	SECURITY ACCESS MASTER STATION INTERCOM	S	SECURITY ACCESS - SENSOR, BURIED VEHICULAR
C	SECURITY ACCESS TELEVISION CAMERA	S	SECURITY ACCESS PANIC ALARM	S	SECURITY ACCESS - SWITCH, BALANCED MAGNETIC CONTROL
B	SECURITY ACCESS BELL	S	SECURITY ACCESS - VIDEO CAMERA WITH LENS	S	SECURITY ACCESS - TELEPHONE HANDSET
C	SECURITY ACCESS BUZZER	S	SECURITY ACCESS - VIDEO CAMERA WITH LENS, MOTION DETECTOR WITH PAN AND ZOOM	S	SECURITY ACCESS - TOUCH PAD LOCK OR DEVICE
IRU	SECURITY ACCESS INFRARED AND ULTRASONIC MOTION DETECTOR	S	SECURITY ACCESS - VIDEO CAMERA, PANNING CAMERA TRAVERSE ANGLE	S	SECURITY ACCESS - ULTRASONIC MOTION DETECTOR
C	SECURITY ACCESS INTERCOM STATION	S	SECURITY ACCESS PASSIVE INFRARED MOTION DETECTOR	REX	SECURITY ACCESS - REQUEST-TO-EXIT DETECTOR
CR	SECURITY ACCESS, CARD READER	S	SECURITY ACCESS, BIOMETRIC ACCESS CONTROL	D	SECURITY ACCESS - DOOR OPENER

GRAPHIC SYMBOLS MATERIALS (CONT)

NEW CONCRETE OR PORTLAND CEMENT PLASTER	NEW GYPSUM PLASTER OR GYPSUM BOARD	NEW ACOUSTIC PANELS IN EXISTING SUSPENSION SYSTEM
METAL	ACOUSTIC PANEL OR TILE CEILING SYSTEM	ACOUSTIC PANEL OR TILE CEILING SYSTEM (RESILIENT MATERIALS AND SPECIALTIES)
FINISH CABINETRY OR ARCHITECTURAL WOODWORK (TRANSPARENT FINISH)	ACOUSTIC PANEL OR TILE CEILING SYSTEM (both used where used to differentiate from other areas with no panels in existing suspension system)	ACOUSTIC PANEL OR TILE CEILING SYSTEM
GLASS OR MIRROR	EXISTING ACOUSTIC PANEL OR TILE CEILING SYSTEM	EXISTING ACOUSTIC PANEL OR TILE CEILING SYSTEM

GRAPHIC SYMBOLS MECHANICAL

T	ROOM THERMOSTAT	R	ROUND RETURN AIR DUCT PLAN-UP OR SECTION	E	EXPOSED DUCT - IN DIRECTION OF AIR FLOW
M	ROOM HUMIDISTAT (MOISTURE)	R	RECTANGULAR RETURN AIR DUCT SECTION PLAN DOWN	R	DIFFUSER, CEILING, ROUND
HVAC	HVAC CONTROL PANEL	R	ROUND RETURN AIR DUCT SECTION PLAN DOWN	R	SUPPLY AIR GRILLE, CEILING, RECTANGULAR OR SQUARE
R	RECTANGULAR SUPPLY AIR DUCT PLAN-UP OR SECTION	R	RECTANGULAR EXHAUST AIR DUCT PLAN-UP OR SECTION	R	RETURN AIR GRILLE, CEILING, RECTANGULAR OR SQUARE
R	ROUND SUPPLY AIR DUCT PLAN-UP OR SECTION	R	ROUND EXHAUST AIR DUCT PLAN-UP OR SECTION	R	EXHAUST AIR GRILLE, CEILING, RECTANGULAR OR SQUARE
R	RECTANGULAR SUPPLY AIR DUCT SECTION PLAN-DOWN	R	RECTANGULAR EXHAUST AIR DUCT PLAN-DOWN	R	DIFFUSER, LINEAR
R	ROUND SUPPLY AIR DUCT SECTION PLAN DOWN	R	ROUND EXHAUST AIR DUCT SECTION PLAN DOWN	R	GRILLE, TRANSFER
R	RECTANGULAR RETURN AIR DUCT PLAN-UP OR SECTION	R	EXPOSED DUCT - IN DIRECTION OF AIR FLOW	R	LOUVER, DOOR OR WALL OPENING

GRAPHIC SYMBOLS MATERIALS

HATCH PATTERNS - PLANS AND SECTIONS

EARTH (UNDISTURBED)	CONCRETE	RIGID INSULATION
EARTH (FILL)	CONCRETE UNIT MASONRY	BLANKET INSULATION
POROUS BASE	CLAY UNIT MASONRY OR GENERIC NEW MASONRY	
SAND, GROUT, STONE DUST OR ENGINEERED FILL	STONE, REFRACTORIES, STONE OR CERAMIC TILE	

GRAPHIC SYMBOLS ANNOTATION

DIMENSION TYPES

architectural tick (slash) type terminators typically indicate dimensions to corners, edges such as faces of concrete, masonry, framing, casework etc.	dot type terminators typically indicate dimensions to centers of wells, columns, openings (doors etc.), fixtures and equipment
arrow type terminators typically indicate dimensions to faces of new and existing finish surfaces and/or indicate required or minimum required clearances	

DRAWING BLOCK IDENTIFIER

drawing block location on sheet: 1st character (letter) and 2nd character (number) corresponds to letters running vertically and numbers running horizontally on faces of drawing area border

drawing block scale when sheet is printed full size

REFERENCE IDENTIFIERS

SECTION	DETAIL ENLARGEMENT
ELEVATION	REFERENCE TO DETAIL NUMBER
ELEVATION	REFERENCE TO SHEET NUMBER
INTERIOR ELEVATION	CONFERENCE
INTERIOR ELEVATION	ROOM OR SPACE IDENTIFIER
DETAIL	DOOR OPENING/BORROWED LIGHT IDENTIFIER
NORTH INDICATOR	STAIR OR RAMP DIRECTION IDENTIFIER
KEY NOTE, GENERAL AND NEW WORK	PARTITION OR WALL TYPE ASSEMBLY
KEY NOTE, EXISTING CONDITIONS	FLOOR ELEVATION DATUM IDENTIFIER
KEY NOTE, DEMOLITION/REMOVALS	NON-FLOOR ELEVATION DATUM IDENTIFIER
PRODUCT IDENTIFIER see applicable schedule	BREAK LINE
applicable specification section	MATCH LINE
REFERENCE NOTE	SEE XX/AXXX MATCH LINE
WINDOW/GLAZED OPENING IDENTIFIER	CONTRACT LIMIT LINE
LOUVER TYPE IDENTIFIER	REVISION IDENTIFIER
MILLWORK IDENTIFIER	

Ownership and use of documents: Drawings and specifications, as instruments of professional service, are and shall remain the property of the Architect. These documents are not to be used in whole or in part, for any other projects or purposes, or by any other parties, than those expressly authorized by contract, without the specific written authorization of Christopher Williams Architects, LLC.

STRUCTURAL ENGINEER

Morrissey Engineering, LLC
50 Essex Street
Deep River, CT 06417
860-532-0312

MEP ENGINEER

Hallam ICS
575 West Street, Suite 220
Mansfield, MA 02048
Tel: 508.821.9759 Fax: 508.821.9759

ROOFING CONSULTANT

M A CAPUTO | ASSOCIATES, LLC
ROOF & BUILDING ENVELOPE CONSULTANTS

PROJECT NAME

MARTIN CENTER ROOF REPLACEMENT

120 BROAD STREET
NEW LONDON, CT 06320

CHRISTOPHER WILLIAMS ARCHITECTS LLC
85 Willow Street New Haven, CT 06511
203 776 0184 cwilliams@ctwilliams.com

NO.	DATE	REVISION
1	07/22/15	FOR CONSTRUCTION

ISSUE/REVISION

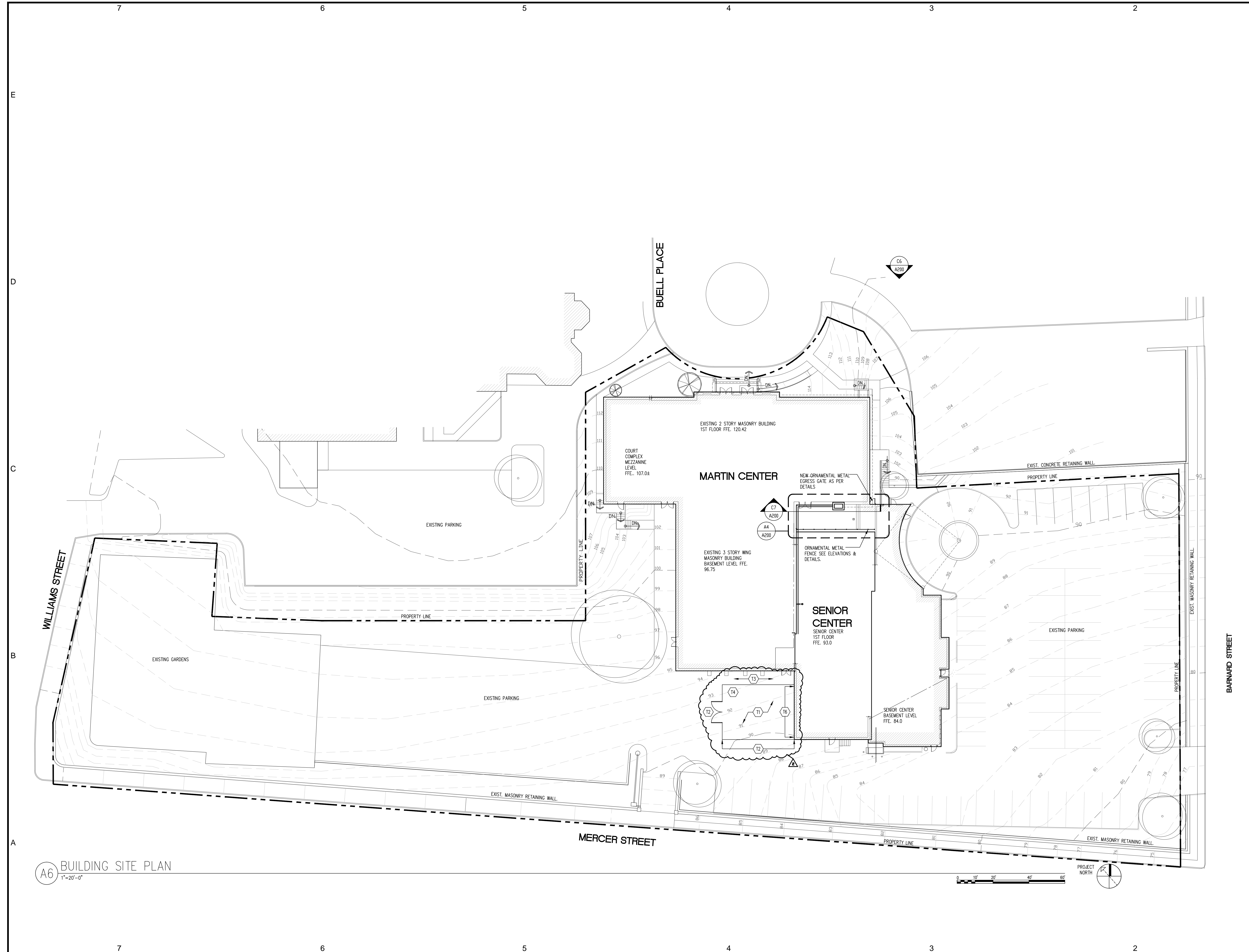
DRAWING TITLE

ABBREVIATIONS GRAPHIC SYMBOLS

SHEET NUMBER

G001

PROJECT NUMBER



GENERAL NOTES

- The intent of the Contract Documents is to include all items necessary for the proper execution and completion of all Work by the Contractor. The Contract Documents are complementary, and what is required by one shall be as binding as if required by all. Where a conflict within the Contract Documents exists, the Contractor shall provide the better quality or greater quantity of work in accordance with the Architect's resolution without any increase in the Contract sum. Organization of the Specifications into divisions, sections and articles, and arrangement of sheets shall not control the Contractor in dividing the work among subcontractors, or in establishing the extent of Work to be performed by any trade.
- REFERENCE KEY NOTES and SHEET KEY NOTES are intended to indicate and clarify the extent and requirements of the Work. They do not indicate every location or occurrence of required Work. The lack of a key note to an individual item of Work will not relieve the Contractor of responsibility to execute that Work as part of the Contract when the requirement for that Work is logically inferred by other parts of the Contract Documents.
- All corners are 90 degrees unless noted or dimensioned otherwise.

TEMPORARY FACILITIES AND CONTROLS

(T1) CONTRACTOR STAGING AREA:
APPROXIMATELY 30'-0" X 40'-0". REVIEW EXACT CONFIGURATION AND LOCATION WITH OWNER BEFORE ERECTING.

(T2) TEMPORARY FENCE AT MINIMUM 6'-0" HEIGHT.

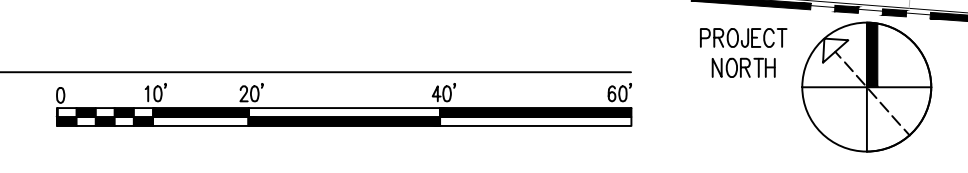
(T3) TEMPORARY GATE AT SAME HEIGHT AS FENCE WITH LOCK.

(T4) MAINTAIN 5'-0" WIDE EGRESS PATHWAY.

(T5) TEMPORARY TOILET FACILITY LOCATED WITHIN FENCED ENCLOSURE.

(T6) ROOF ACCESS AREA.

(A6) BUILDING SITE PLAN
1"=20'-0"



SURVEY NOTE

EXISTING SITE SURVEY INFORMATION (EXISTING CONTOURS, PAVED AREAS, SIDEWALKS, RETAINING WALLS, CURBS ETC.) FROM SITE PLAN DRAWING C-1 FOR NEW LONDON SENIOR CITIZEN'S CENTER DATED 4-1-1987 BARUN BASU ASSOCIATES ARCHITECTS

PROPERTY LINE LAYOUT FROM BOUNDARY PLAN OF PROPERTY OF CITY OF NEW LONDON AND THE NORWICH CATHOLIC DIOCESAN CURIA WILLIAMS STREET, BROAD STREET AND BUELL PLACE, NEW LONDON CT. DATED JUNE 1980 DICESARE-BENTLEY-WELLS ENGRS. INC. GROTON-NORWICH, CONNECTICUT

Ownership and use of documents:
Drawings and specifications, as instruments of professional service, are and shall remain the property of the Architect. These documents are not to be used in whole or in part, for any other projects or purposes, or by any other parties, than those properly authorized by contract, without the specific written authorization of Christopher Williams Architects, LLC.

STRUCTURAL ENGINEER
Morrissey Engineering, LLC
58 Essex Street
Deep River, CT 06417
860-532-0312

MEP ENGINEER
Hallam ICS
575 West Street, Suite 220
Mansfield, MA 02048
Tel: 508.821.9759 Fax: 508.821.9739

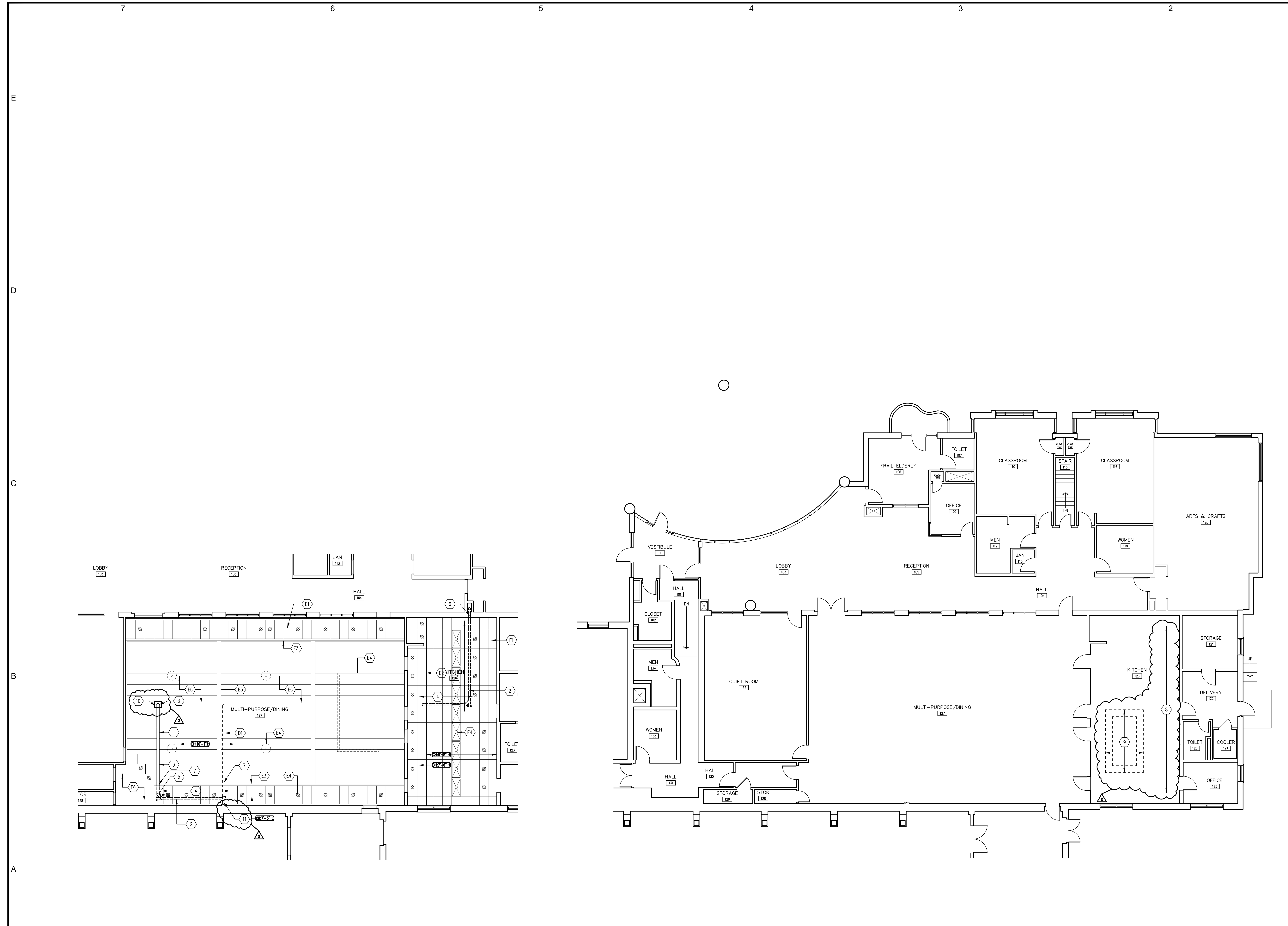
ROOFING CONSULTANT
M A CAPUTO | ASSOCIATES, LLC
ROOF & BUILDING ENVELOPE CONSULTANTS

PROJECT NAME
MARTIN CENTER ROOF REPLACEMENT
120 BROAD STREET
NEW LONDON, CT 06320

CWA
CHRISTOPHER WILLIAMS ARCHITECTS LLC
85 Willow Street New Haven, CT 06511
203 776 0184 cwarhitectsllc.com

NO.	DATE	REVISION
2	07/29/15	ADDENDUM #1
1	07/22/15	FOR CONSTRUCTION

DRAWING TITLE
SITE PLAN
SHEET NUMBER
C101
PROJECT NUMBER
1418



GENERAL NOTES

- The intent of the Contract Documents is to include all items necessary for the proper execution and completion of all Work by the Contractor. The Contract Documents are complementary, and what is required by one shall be as binding as if required by all. Where a conflict within the Contract Documents exists, the Contractor shall provide the better quality or greater quantity of work in accordance with the Architect's resolution without any increase in the Contract sum. Organization of the Specifications into divisions, sections and articles, and arrangement of sheets shall not control the Contractor in dividing the work among subcontractors, or in establishing the extent of Work to be performed by any trade.
- REFERENCE KEY NOTES and SHEET KEY NOTES are intended to indicate and clarify the extent and requirements of the Work. They do not indicate every location or occurrence of required Work. The lack of a key note to an individual item of Work will not relieve the Contractor of responsibility to execute that Work as part of the Contract when the requirement for that Work is logically inferred by other parts of the Contract Documents.
- All corners are 90 degrees unless noted or dimensioned otherwise.

EXISTING CONDITIONS KEY NOTES

- (E1) EXISTING ACOUSTIC PANEL CEILING
- (E2) EXISTING CEILING LEVEL CHANGE
- (E3) EXISTING CEILING LEVEL CHANGE - GYPSUM BOARD BULKHEAD
- (E4) EXISTING LUMINAIRE
- (E5) EXISTING BEAM
- (E6) EXISTING PAINTED CEILING

DEMOLITION KEYNOTES

- (D1) REMOVE EXISTING RWI INCLUDING ALL RELATED FITTINGS, HANGERS ETC. SEE PLUMBING SHEET FOR FURTHER REQUIREMENTS

NEW WORK KEY NOTES

- (1) NEW RWI - EXPOSED - SEE PLUMBING SHEET FOR FURTHER REQUIREMENTS - PAINT TO MATCH EXISTING CEILING.
- (2) NEW RWI - ABOVE EXISTING ACOUSTIC PANEL CEILING.
- (3) PATCH, REPAIR AND PAINT CEILING AT ABANDONED PENETRATION AT REMOVED HANGERS ETC. AND AT DAMAGE RELATED TO EXISTING ROOF DRAIN AND RWI AND WHERE DAMAGED DURING THE EXECUTION OF THE WORK.
- (4) REMOVE AND RE-INSTALL ACOUSTIC PANELS, REPLACE DAMAGED PANELS WITH NEW MATCHING EXISTING, REPLACE ANY DAMAGED GRID WITH MATCHING - FULL LENGTH PIECES ONLY.
- (5) REMOVE AND RE-INSTALL LUMINAIRE IN NEW LOCATION - CIRCUITING TO REMAIN THE SAME.
- (6) OUT, PATCH AND FIRESTOP - WALL PENETRATION FOR CONNECTION OF NEW TO EXISTING WORK THROUGH MASONRY WALL.
- (7) OUT, PATCH, REPAIR AND PAINT BULKHEAD AT NEW AND REMOVED PIPE PENETRATIONS.
- (8) BAR JOIST AND METAL DECK ROOF STRUCTURE ABOVE. VERIFY SPACING AND SIZE IN FIELD.
- (9) PATCH METAL DECKING AT REMOVED AHU. SPAN 2 JOISTS MINIMUM MATCH EXISTING METAL DECK DEPTH AND TOP OF DECK ELEVATION OVERLAPPING OPENING.
- (10) PROVIDE SHEET METAL ENCLOSURE AT NEW ROOF DRAIN PER DETAILS.
- (11) OUT AND PATCH PIPE ENCLOSURE FOR RAIN WATER LEADER WORK. SEE MEP101 FOR DETAILS.

A7 SENIOR CENTER MAIN FLOOR PARTIAL REFLECTED CEILING PLAN
 1/8" = 1'-0"
 PROJECT NORTH

A5 SENIOR CENTER MAIN FLOOR PLAN ELEVATION: +93'-0"
 1/8" = 1'-0"
 PROJECT NORTH

Ownership and use of documents:
 Drawings and specifications, as instruments of professional service, are and shall remain the property of the Architect. These documents are not to be used in whole or in part, for any other projects or purposes, or by any other parties, than those properly authorized by contract, without the specific written authorization of Christopher Williams Architects, LLC.

Morrissey Engineering, LLC
 58 Essex Street
 Deep River, CT 06417
 860-532-0312

Hallam ICS
 575 West Street, Suite 220
 Mansfield, MA 02048
 Tel: 508.821.9759 Fax: 508.821.9739

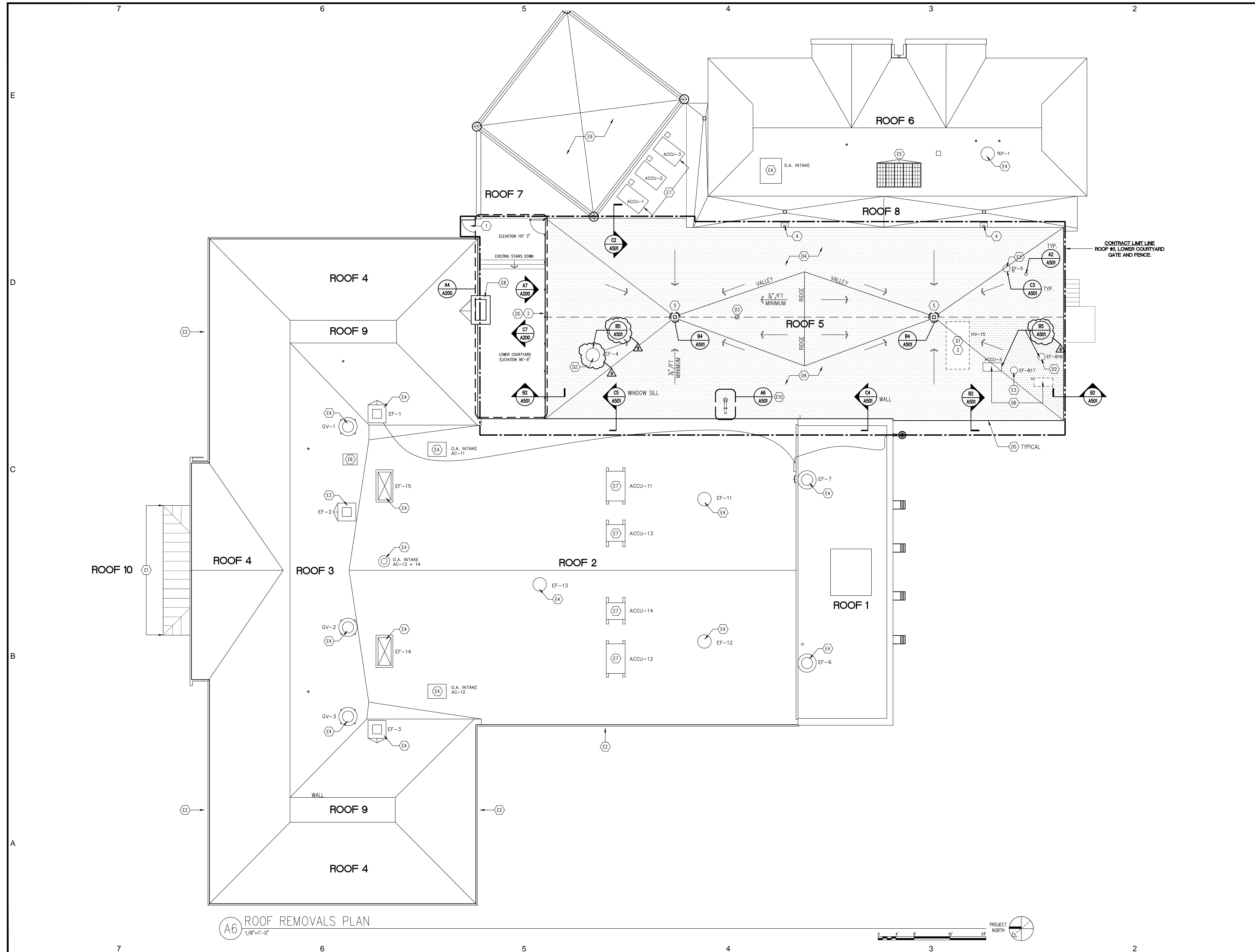
M A CAPUTO | ASSOCIATES, LLC
 ROOF & BUILDING ENVELOPE CONSULTANTS

MARTIN CENTER ROOF REPLACEMENT
 120 BROAD STREET
 NEW LONDON, CT 06320

CWA
 CHRISTOPHER WILLIAMS ARCHITECTS LLC
 85 Willow Street New Haven, CT 06511
 203 776 0184 cwarchitectsllc.com

NO.	DATE	REVISION
2	07/29/15	ADDENDUM #1
1	07/22/15	FOR CONSTRUCTION

SENIOR CENTER - MAIN FLOOR PLAN AND PARTIAL REFLECTED CEILING PLAN
 SHEET NUMBER
A101
 PROJECT NUMBER
 1418



A6 ROOF REMOVALS PLAN
1/8"=1'-0"

GENERAL NOTES

- The intent of the Contract Documents is to include all items necessary for the proper execution and completion of all Work by the Contractor. The Contract Documents are complementary, and what is required by one shall be as binding as if required by all. Where a conflict within the Contract Documents exists, the Contractor shall provide the better quality or greater quantity of work in accordance with the Architect's resolution without any increase in the Contract sum. Organization of the Specifications into divisions, sections and articles, and arrangement of sheets shall not control the Contractor in dividing the work among subcontractors, or in establishing the extent of Work to be performed by any trade.
- REFERENCE KEY NOTES and SHEET KEY NOTES are intended to indicate and clarify the extent and requirements of the Work. They do not indicate every location or occurrence of required Work. The lack of a key note to an individual item of Work will not relieve the Contractor of responsibility to execute that Work as part of the Contract when the requirement for that Work is logically inferred by other parts of the Contract Documents.
- All corners are 90 degrees unless noted or dimensioned otherwise.

EXISTING CONDITIONS KEY NOTES

- (E1) EXISTING FLAT SEAM COPPER ROOF.
- (E2) EXISTING BUILT IN GUTTER.
- (E3) EXISTING FANS TO REMAIN. SEE MEPI01 FOR DETAILS. PROVIDE NEW CURB FLASHING.
- (E4) EXISTING FAN AND VENT TO REMAIN.
- (E5) EXISTING SKYLIGHT.
- (E6) EXISTING ROOF HATCH.
- (E7) EXISTING HVAC EQUIPMENT.
- (E8) EXISTING MASONRY CHIMNEY.
- (E9) EXISTING KALWALL ROOFING SYSTEM.
- (E10) EXISTING RAIN WATER LEADER INTO BUILDING.

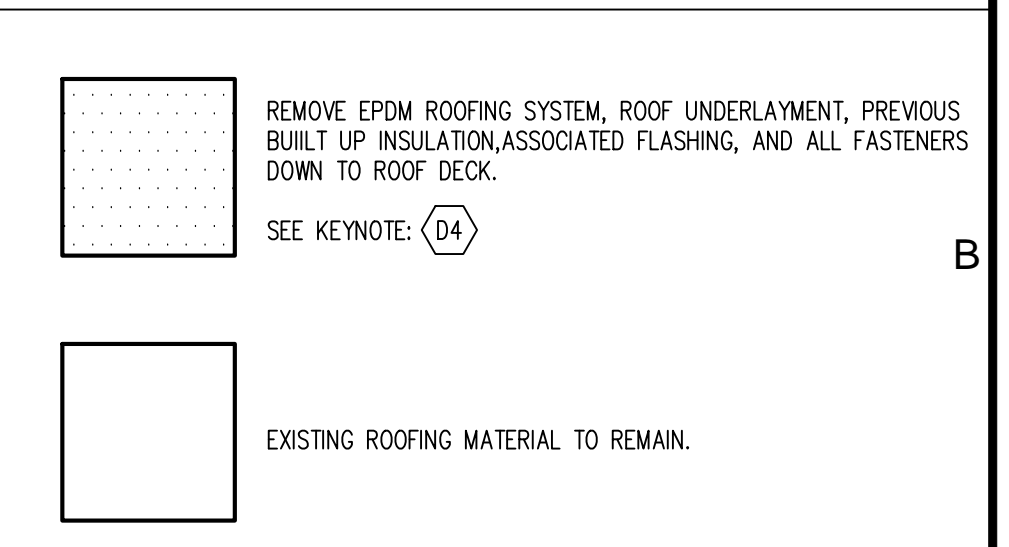
DEMOLITION KEY NOTES

- (D1) REMOVE ABANDONED HVAC UNIT.
- (D2) REMOVE FAN AND CURB. REPLACE PER MEPI01.
- (D3) REMOVE EXISTING ROOF DRAIN AND ASSOCIATED PIPING. (SEE MEPI01)
- (D4) REMOVE FROM ROOFING SYSTEM. SEE KEY BELOW.
- (D5) REMOVE ROOF EDGE, GRAVEL STOP, EDGE FLASHING. REMOVE AND REPLACE DAMAGED WOOD WALKER. ADD WOOD WALKER TO EXISTING.
- (D6) REMOVE, SALVAGE, AND REINSTALL AT NEW LOCATION. REMOVE EXISTING MOUNTING RAILS, CURBS, DRAINAGE, ETC. PROVIDE NEW ELECTRICAL AND REFRIGERANT PENETRATIONS. PROVIDE NET CURB & FLASHING.

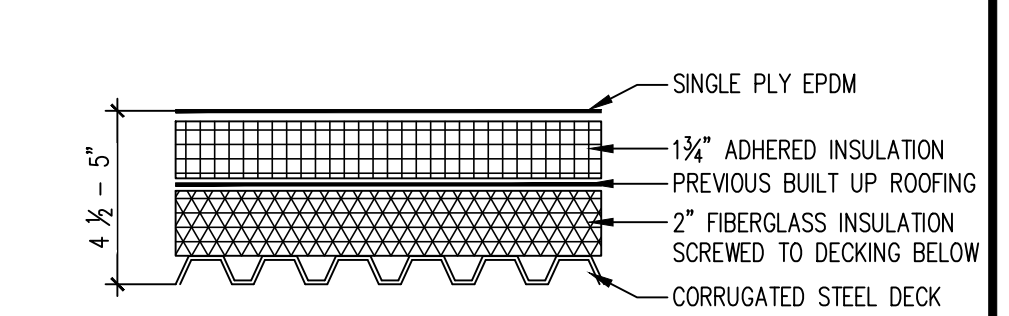
NEW WORK KEY NOTES

- (1) SELF CLOSING GATE.
- (2) SECURITY FENCE TO RESTRICT ACCESS TO ROOF.
- (3) PATCH ALL OPENINGS WITH METAL DECK PER SPECIFICATIONS.
- (4) PROVIDE NEW SCUPPER AT NEW ROOF HEIGHT TO MATCH EXISTING.
- (5) INSTALL NEW ROOF DRAIN, AND DRAIN PIPING. CONNECT TO EXISTING STORM WATER DRAIN PIPING WHERE SHOWN. SEE MEPI01 FOR DETAILS.

ROOFING REMOVALS KEY



EXISTING ROOFING CONDITIONS



ASBESTOS ABATEMENT

ROOF #	TESTING SAMPLE #	DESCRIPTION	APPROX. SQFT.
1,2 & 5	1-5	Glue Only - Rubber Membrane	12,853sqft
1-5	7-8	Hard Black Flashing Mastic around Penetrations, Edge of Roofs, and sidewalls	>100sqft

Ownership and use of documents:
Drawings and specifications, as instruments of professional service, are and shall remain the property of the Architect. These documents are not to be used in whole or in part, for any other projects or purposes, or by any other parties, than those properly authorized by contract, without the specific written authorization of Christopher Williams Architects, LLC.

STRUCTURAL ENGINEER

 Morrissey Engineering, LLC
 58 Essex Street
 Deep River, CT 06417
 860-532-0312

MEP ENGINEER

 Hallam/ICS
 375 West Street, Suite 220
 Mansfield, MA 02048
 Tel: 508.821.9759 Fax: 508.821.9739

ROOFING CONSULTANT

 M A CAPUTO ASSOCIATES, LLC
 ROOF & BUILDING ENVELOPE CONSULTANTS

PROJECT NAME
MARTIN CENTER ROOF REPLACEMENT
 120 BROAD STREET
 NEW LONDON, CT 06320

CWA
 CHRISTOPHER WILLIAMS ARCHITECTS LLC
 95 Willow Street New Haven, CT 06511
 203 776 0184
 cwarchitects.com

NO.	DATE	REVISION
3	08/07/15	ADDENDUM #2
2	07/29/15	ADDENDUM #1
1	07/22/15	FOR CONSTRUCTION

DRAWING TITLE
ROOF PLAN
 SHEET NUMBER
A102
 PROJECT NUMBER
1418



C7 GATE ELEVATION-LOOKING NORTH
1/8"=1'-0"

C6 NORTH ELEVATION/ GATE ELEVATION-LOOKING SOUTH
1/8"=1'-0"

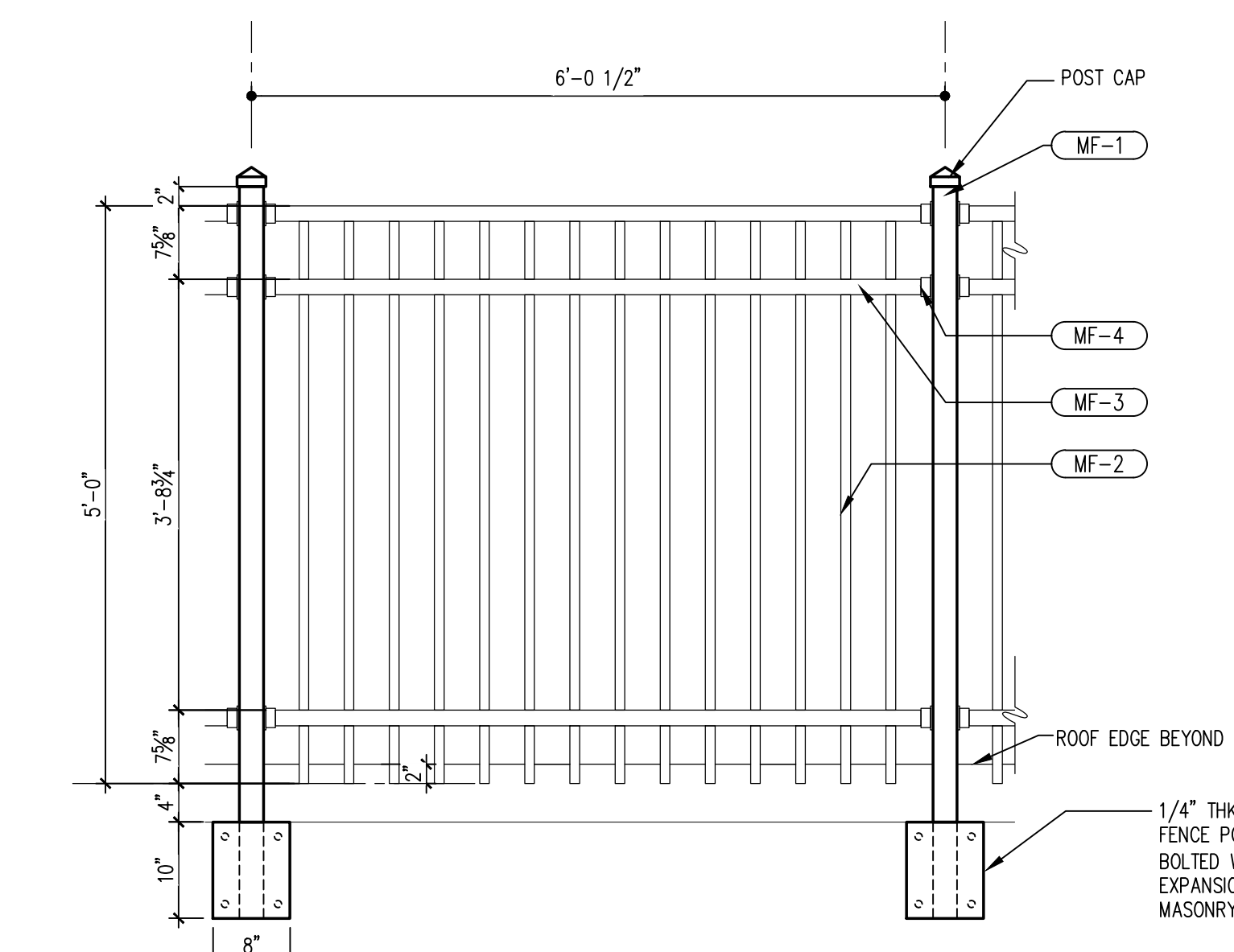
GENERAL NOTES

- The intent of the Contract Documents is to include all items necessary for the proper execution and completion of all Work by the Contractor. The Contract Documents are complementary, and what is required by one shall be as binding as if required by all. Where a conflict within the Contract Documents exists, the Contractor shall provide the better quality or greater quantity of work in accordance with the Architect's resolution without any increase in the Contract sum. Organization of the Specifications into divisions, sections and articles, and arrangement of sheets shall not control the Contractor in dividing the work among subcontractors, or in establishing the extent of Work to be performed by any trade.
- REFERENCE KEY NOTES and SHEET KEY NOTES are intended to indicate and clarify the extent and requirements of the Work. They do not indicate every location or occurrence of required Work. The lack of a key note to an individual item of Work will not relieve the Contractor of responsibility to execute that Work as part of the Contract when the requirement for that Work as logically inferred by other parts of the Contract Documents.
- All corners are 90 degrees unless noted or dimensioned otherwise.

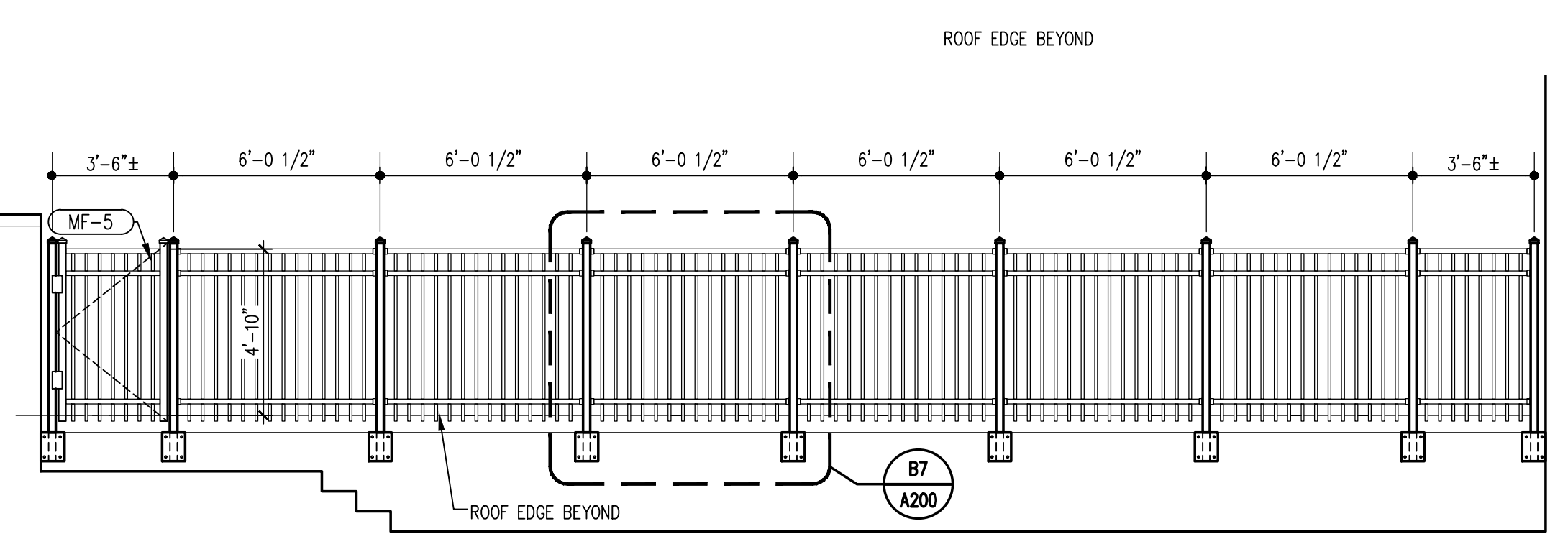
EXISTING CONDITIONS KEY NOTES

- E1 EXISTING AREA DRAIN TO REMAIN.
- E2 EXISTING EXIT DOORS.

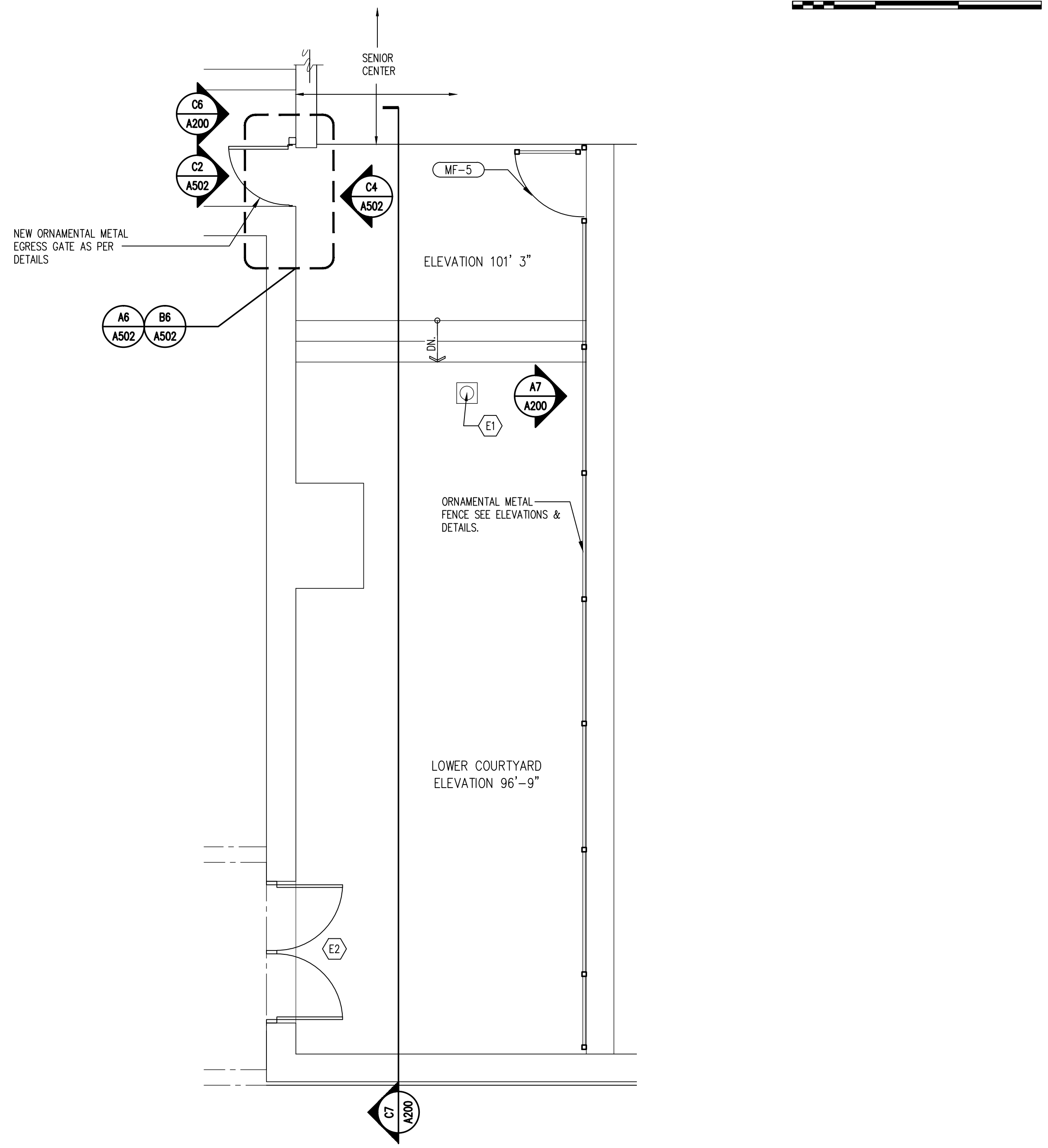
METAL PRODUCTS SCHEDULE				
PRODUCT IDENTIFIER	PRODUCT DESCRIPTION	MANUFACTURER	METAL	COLOR
MF-1	POSTS 2 1/2" SQ. x .100" W/POST CAP	AFS	6005-T5 ALUM.	BLACK
MF-2	PICKETS 1" SQ. x .062"	AFS	6005-T5 ALUM.	BLACK
MF-3	RAILS- 1 5/8" SQ. CHANNELS 1 5/8" x .070" TOP WALL 1 5/8" x .100" SIDE WALLS	AFS	6005-T5 ALUM.	BLACK
MF-4	BRACKET TO RECEIVE RAILS TYP.	AFS	6005-T5 ALUM.	BLACK
MF-5	UAF 200 STANDARD WALK GATE HORIZONTAL RAILS- 1 5/8" SQ. 1 5/8" x .070" TOP WALL 1 5/8" x .100" SIDE WALLS	AFS	6005-T5 ALUM.	BLACK
	INCLUDE: TRU-CLOSE HINGES	AFS	6005-T5 ALUM.	BLACK
	4 3/4" GATE STOP	AFS	6005-T5 ALUM.	BLACK
	LOCKLATCH MAGNETIC/LOCKABLE LOCK CLASP FOR PADLOCK SECURED TO GATE/POST	AFS	6005-T5 ALUM.	BLACK
STAINLESS STEEL FASTENERS TYP.				
FINISH TYP. =POLYESTER TGIC POWDER COAT-BLACK				
AFS=ALUMINUM FENCE SPECIALISTS, LLC-MANUFACTURED BY ULTRA MFG. INC. (ALUMINUMFENCE SPECIALISTS.COM)				



B7 TYPICAL FENCE PANEL ELEVATION
3/4"=1'-0"



A7 FENCE ELEVATION LOOKING SOUTH
1/4"=1'-0"



A4 ENLARGED PLAN
1/4"=1'-0"

Ownership and use of documents:
Drawings and specifications, as instruments of professional service, are and shall remain the property of the Architect. These documents are not to be used in whole or in part, for any other projects or purposes, or by any other parties, than those properly authorized by contract, without the specific written authorization of Christopher Williams Architects, LLC.

STRUCTURAL ENGINEER
Morrissey Engineering, LLC
59 Essex Street
Deep River, CT 06417
860-532-0312

MEP ENGINEER
Hallam ICS
575 West Street, Suite 220
Mansfield, MA 02048
Tel: 508.821.9759 Fax: 508.821.9739

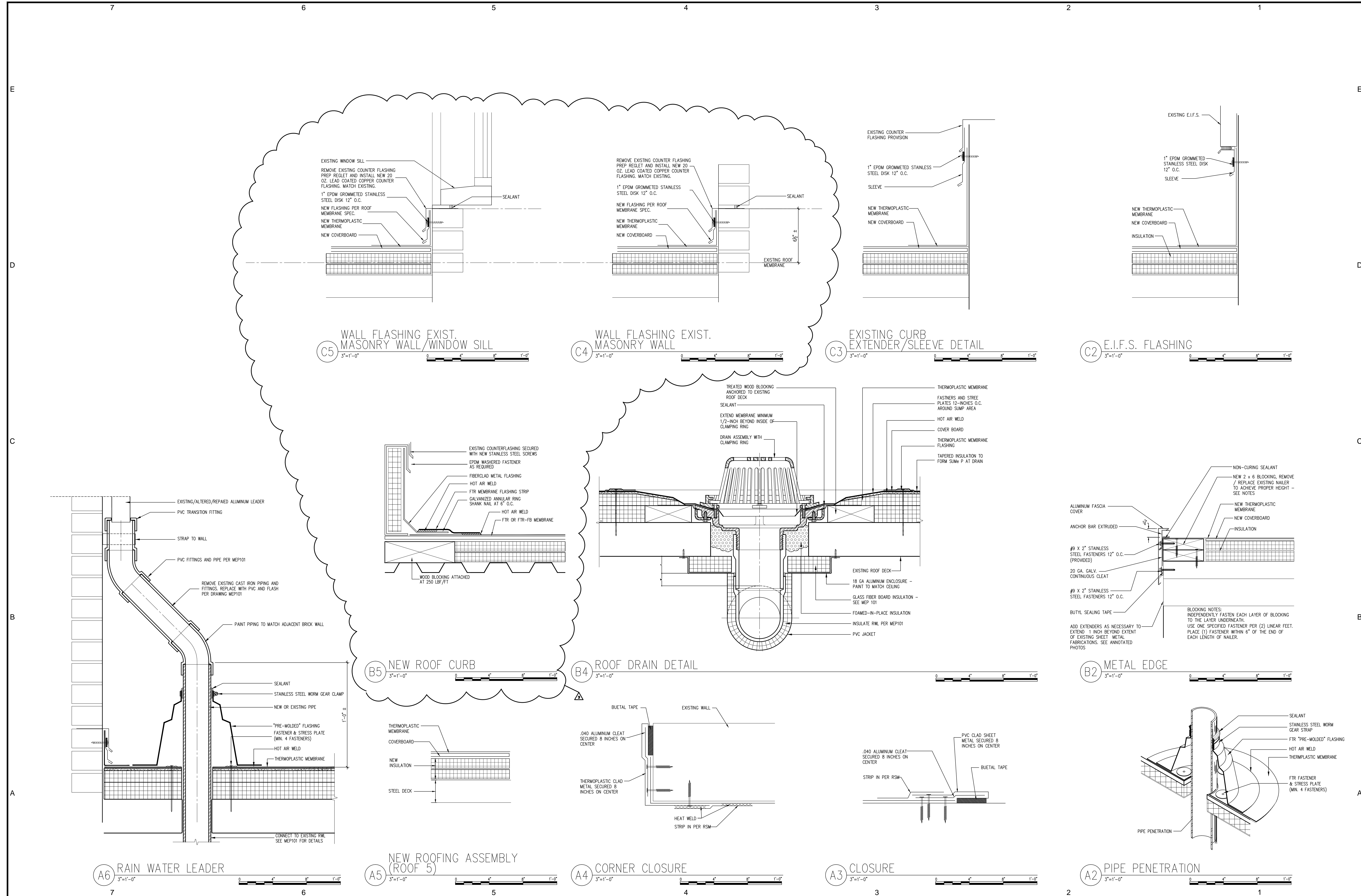
ROOFING CONSULTANT
M A CAPUTO | ASSOCIATES, LLC
ROOF & BUILDING ENVELOPE CONSULTANTS

PROJECT NAME
MARTIN CENTER
ROOF REPLACEMENT
120 BROAD STREET
NEW LONDON, CT 06320

CWA
CHRISTOPHER WILLIAMS ARCHITECTS LLC
85 Willow Street New Haven, CT 06511
203 776 0184 cwilliams@cwarchitects.com

NO.	DATE	REVISION
2	07/29/15	ADDENDUM #1
1	07/22/15	FOR CONSTRUCTION
ISSUE/REVISION		

DRAWING TITLE
EXTERIOR ELEVATIONS
SHEET NUMBER
A200
PROJECT NUMBER
1418



Ownership and use of documents:
 Drawings and specifications, as instruments of professional service, are and shall remain the property of the Architect. These documents are not to be used in whole or in part, for any other projects or purposes, or by any other parties, than those properly authorized by contract, without the specific written authorization of Christopher Williams Architects, LLC.

STRUCTURAL ENGINEER

Morrissey Engineering, LLC
 58 Essex Street
 Deep River, CT 06417
 860-532-0312

MEP ENGINEER

Hallam ICS
 575 West Street, Suite 220
 Mansfield, MA 02048
 Tel: 508.821.9759 Fax: 508.821.9739

ROOFING CONSULTANT

M A CAPUTO | ASSOCIATES, LLC
 ROOF & BUILDING ENVELOPE CONSULTANTS

PROJECT NAME

**MARTIN CENTER
 ROOF REPLACEMENT**

120 BROAD STREET
 NEW LONDON, CT 06320

CHRISTOPHER WILLIAMS ARCHITECTS LLC
 85 Willow Street New Haven, CT 06511
 203 776 0184 cwarchitectsllc.com

NO.	DATE	REVISION
3	08/07/15	ADDENDUM #2
2	07/29/15	ADDENDUM #1
1	07/22/15	FOR CONSTRUCTION

DRAWING TITLE

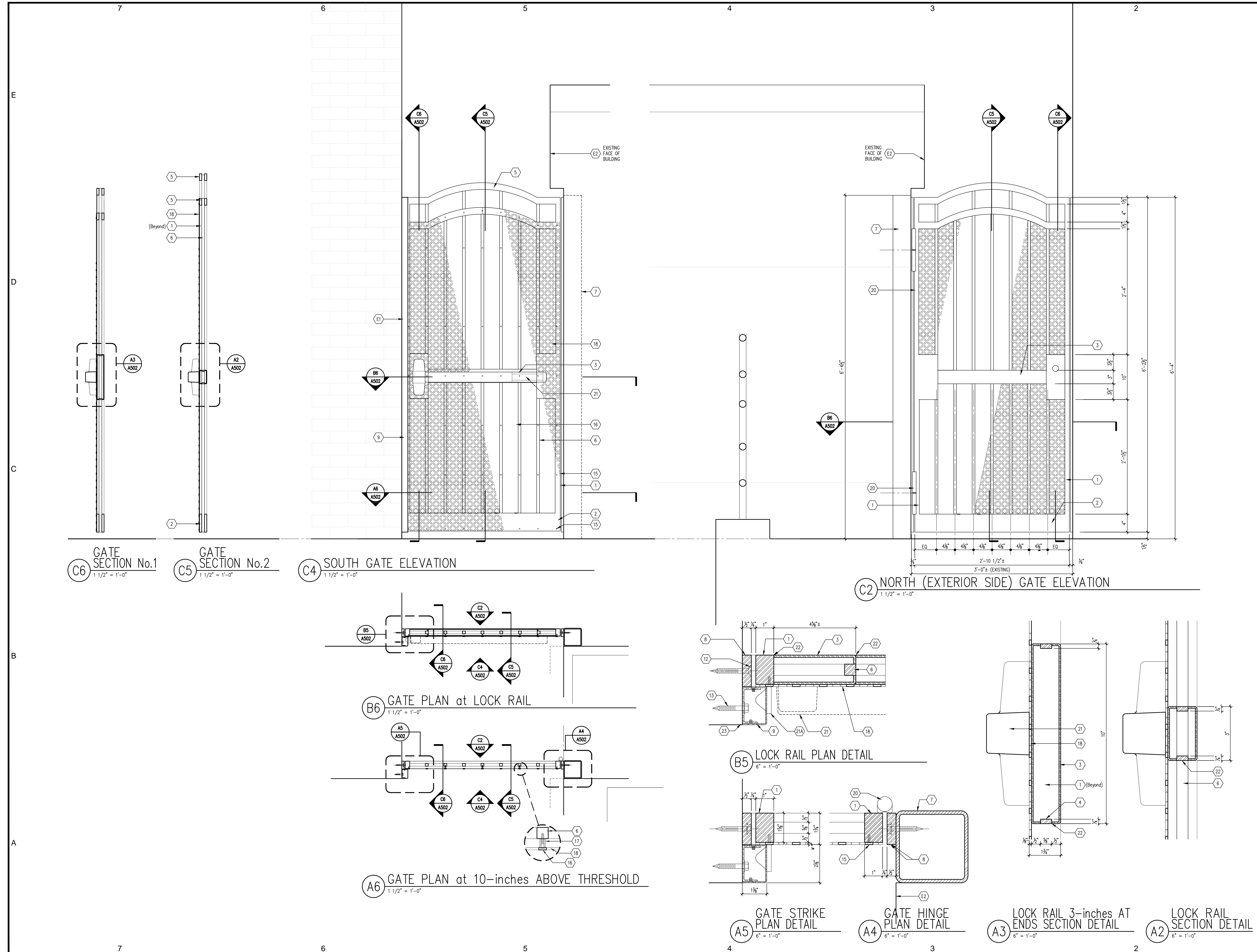
**THERMOPLASTIC
 ROOF DETAILS**

SHEET NUMBER

A501

PROJECT NUMBER

1418



- GENERAL NOTES**
- The intent of the Contract Documents is to include all items necessary for the proper execution and completion of all Work by the Contractor. The Contract Documents are complementary, and what is required by one shall be as binding as if required by all. Where a conflict within the Contract Documents exists, the Contractor shall provide the better quality or greater quantity of work in accordance with the Architect's resolution without any increase in the Contract sum. Organization of the Specifications into divisions, sections and articles, and arrangement of sheets shall not control the Contractor in dividing the work among subcontractors, or in establishing the extent of Work to be performed by any trade.
 - REFERENCE KEY NOTES and SHEET KEY NOTES are intended to indicate and clarify the extent and requirements of the Work. They do not indicate every location or occurrence of required Work. The lack of a key note to an individual item of Work will not relieve the Contractor of responsibility to execute that Work as part of the Contract when the requirement for that Work is logically inferred by other parts of the Contract Documents.
 - All corners are 90 degrees unless noted or dimensioned otherwise.
- EXISTING CONDITIONS KEY NOTES**
- E1 EXISTING MASONRY WALL
 - E2 EXISTING EIFS WALL
- NEW CONSTRUCTION KEY NOTES**
- GATE STILES: 1"x 1 1/2" STEEL BAR
 - GATE BOTTOM RAIL: 4"x 1/2" STEEL
 - GATE LOCK RAIL: 12 GA STEEL
 - 3/8"x 1/2" SPACERS
 - GATE TOP RAIL: FABRICATE FROM 1/2-INCH STEEL PLATE. NOTE THAT VERTICAL DIMENSION OF PLATE REMAINS 1-1/2 INCHES ACROSS ENTIRE LENGTH - TOP AND BOTTOM RADIUS IS THE SAME.
 - 3/8-INCH SQUARE STEEL BARS
 - HSS TUBE STEEL 4"x 4"x 1/4"
 - 1 1/2"x 1/2" STEEL BARS MATCHING HEIGHT OF GATE, SOWEDED TO EXISTING MASONRY.
 - GATE STOP, ON STRIKE SIDE ONLY - 14 GA STAINLESS STEEL
 - ANCHOR CLIP - 12 GA STAINLESS STEEL
 - STAINLESS STEEL FLAT HEAD SCREWS EQUALLY SPACED 8-INCHES O.C., 2-INCHES FROM EACH END.
 - TAPCON CONCRETE SCREWS: TCF514214 1/4"x 2 1/2" STAINLESS STEEL FLAT COUNTERSUNK PHILLIPS SCREWS 8-INCHES O.C., 2-INCHES FROM EACH END.
 - TAPCON CONCRETE SCREWS: TCHS14134 1/4"x 1 3/4" STAINLESS STEEL HEX WASHER HEAD SCREWS 12-INCHES O.C., 2-INCHES FROM EACH END.
 - 3/8-INCH NO.10 STAINLESS STEEL FLAT HEAD MACHINE SCREWS 8-INCHES O.C., 2-INCHES FROM EACH END.
 - 1/2-INCH NO.10 STAINLESS STEEL FLAT HEAD MACHINE SCREWS SPACED AS SHOWN
 - 1-INCH NO.10 STAINLESS STEEL FLAT HEAD MACHINE SCREWS SPACED AS SHOWN; CENTER SCREWS AT CENTER OF INTERSECTION OF PERFORATIONS.
 - TUBULAR STEEL SPACER
 - 3/8-INCH PERFORATED STEEL SHEET FABRICATED BY ARCHITECTURAL GRILLE, BROOKLYN NEW YORK. PATTERN SIMILAR TO # 220 PATTERN SCALED FOR PATTERN REPEATS SHOWN.
 - CENTER PATTERN.
 - SELF CLOSING WELD-ON HINGES: PRODUCT NUMBER HH80 SOLD BY GATESPLUS WWW.GATESPLUS.COM.AU.
 - RIM EXIT DEVICE: SARGENT 8804, US 32D FINISH. DEVICE TO ACCEPT 7-PIN BEST CORE.
 - RIM EXIT DEVICE STRIKE
 - WELD, GRIND SMOOTH.
 - SEALANT.

Ownership and use of documents:
 Drawings and specifications, as instruments of professional service, are and shall remain the property of the Architect. These documents are not to be used in whole or in part, for any other projects or purposes, or by any other parties, than those specifically authorized by contract, without the specific written authorization of Christopher Williams Architects, LLC.

STRUCTURAL ENGINEER

Morrissey Engineering, LLC
 59 Essex Street
 Deep River, CT 06417
 860-532-0312

MEP ENGINEER

Hallam ICS
 575 West Street, Suite 220
 Mansfield, MA 02048
 Tel: 508.821.9759 Fax: 508.821.9739

ROOFING CONSULTANT

M A CAPUTO | ASSOCIATES, LLC
 ROOF & BUILDING ENVELOPE CONSULTANTS

PROJECT NAME

MARTIN CENTER ROOF REPLACEMENT

120 BROAD STREET
 NEW LONDON, CT 06320

CWA

CHRISTOPHER WILLIAMS ARCHITECTS LLC
 85 Willow Street New Haven, CT 06511
 203 776 0184 cwilliams@ctarchitects.com

NO.	DATE	REVISION
1	07/22/15	FOR CONSTRUCTION

ISSUE/REVISION

DRAWING TITLE

EXTERIOR GATE DETAILS

SHEET NUMBER

A502

PROJECT NUMBER
1418

K:\PROJECTS\1418 MARTIN CENTER NEW LONDON\1418_04 CONTRACT DOCUMENTS\1418_041 SHEET SET\1418_A502 DETAILS_GATE.DWG 7/22/15 4:32 PM CWA

