



# City Of New London

Department of Finance-Purchasing Agent  
13 Masonic Street • New London, CT 06320 • Phone (860) 447-5215 • Fax (860) 447-5297

## Request for Proposals

### ADDENDUM # 2

Proposal No.: **2024-13 CONL**

Addendum No.: 2

Date Issued: March 1, 2024

Roadway Improvements Project- Governor Winthrop Boulevard

Opening Date and Time: March 15, 2024 @ 2:00 P.M.

**Bidders Notes:** This addendum is issued to provide all potential bidders with answers to questions submitted.

All other terms and conditions remain the same.

**This Addendum cover page must be signed and returned with your bid.**

\_\_\_\_\_  
Authorized Signature of Bidder

\_\_\_\_\_  
Company Name

**Return Bid To:**

Joshua Montague, Accounting Purchasing Agent  
City of New London  
13 Masonic Street  
New London, CT 06320

**Bids cannot be accepted after the Bid Opening Date and Time indicated above.**

## 2024-13 CONL

### **ADDENDUM 2**

#### ***Roadway Improvements Project- Governor Winthrop Boulevard***

**RE:** 2024-13 CONL  
**FROM:** Joshua Montague, Accounting Purchasing Agent  
**TO:** Prospective bidders

---

This Addendum shall be part of the Contract Documents and modifies the original bidding documents. This Addendum is to be acknowledged by the bidders on the Bid Form. Failure to do so may subject the bidder to disqualification.

---

#### **Changes to prior Addenda:**

- No change to addendum 1.

#### **Q&A:**

#### **General Items:**

1. The Contractor shall install underground electrical ductwork to two buildings as per Eversource requirements as shown on revised site plan drawing 02 dated 2/27/2024. All material shall be as approved by Eversource. All conduit shall include pulling ropes for Eversource's use in installing the new conductors.

The new ductbanks shall penetrate the existing masonry foundations at a location to be determined by Eversource. Work shall include all excavation, trenching, bedding material, concrete forming and pouring, temporary roadway protection (temporary plates, traffic control), backfill and temporary asphalt patching. All work shall be inspected and approved by Eversource. The Contractor shall coordinate their work with Eversource at the time of switch-over to the new electrical services to each building.

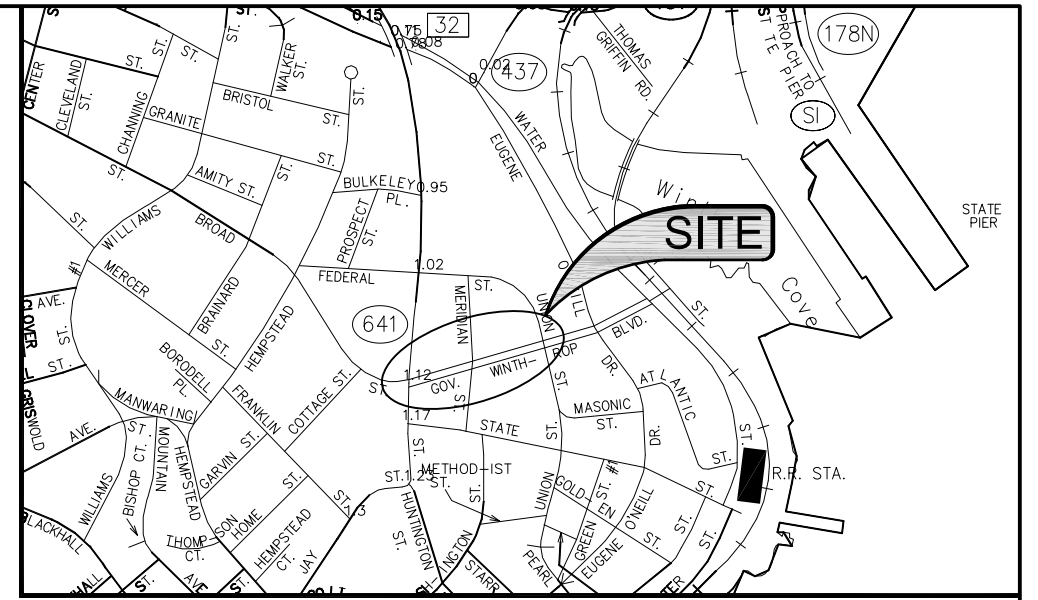
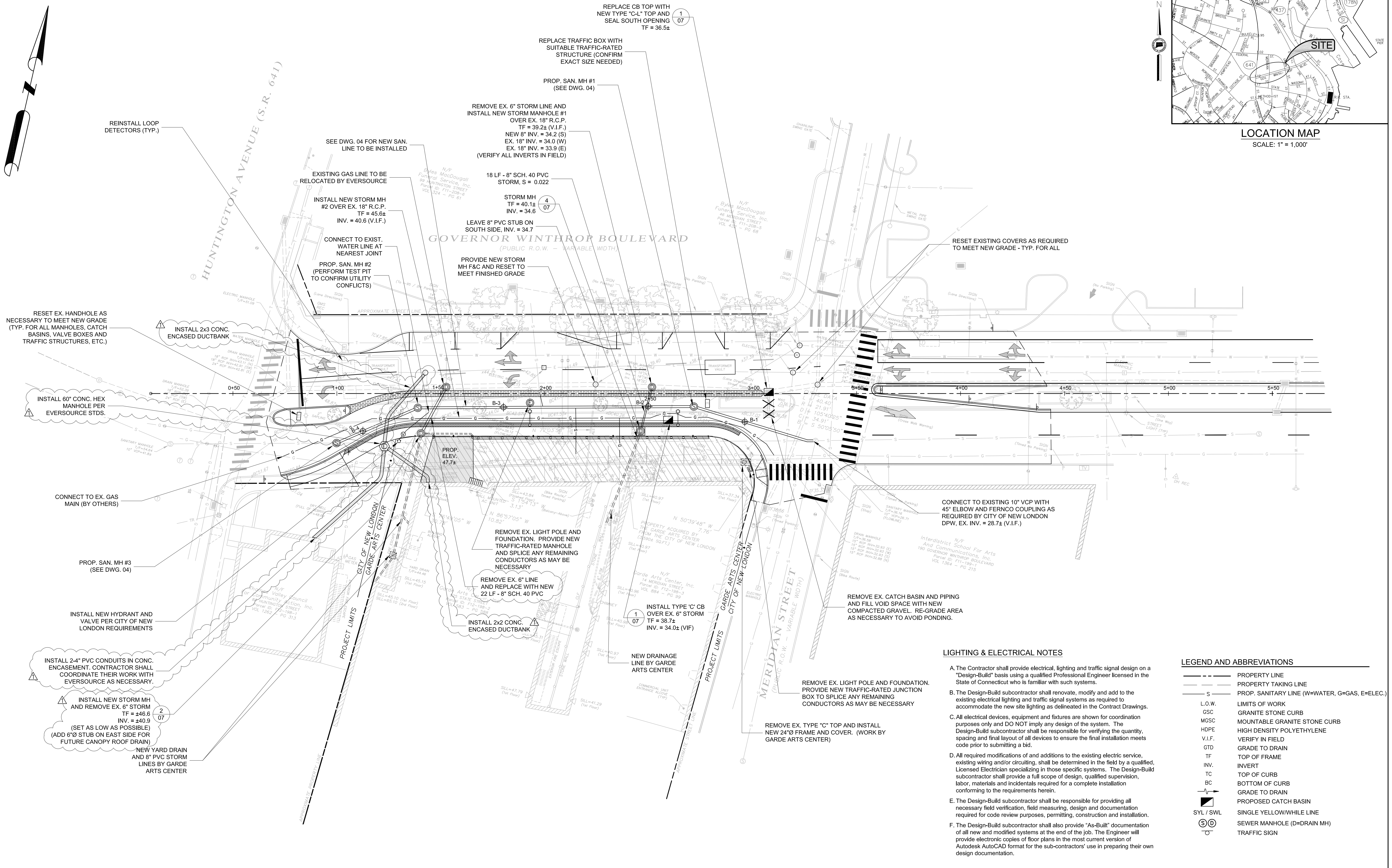
2. The 8" PVC storm line to the west alley shall be reduced from 44 linear feet to 22 linear feet as shown on revised drawing 02. A 6" PVC stub shall be installed on the east side of the manhole for a future connection to the canopy roof drain. Invert depths shall be determined at the time of installation.

#### Attached:

- Revised bid form.
- Revised drawing 02 dated 2/27/2024
- Product sheet for Conduit Bank Construction per Northeast Utilities #DTR-73.209
- Product sheet for Precast Hexagonal Handhole per Northeast Utilities #SPC-H-019
- Product sheet for 38" Electrical Manhole Cover per Northeast Utilities #SPC-C-709

### BID FORM (Revised Addendum #2)

#	Description	Cost
1	General Requirements & Mobilization	
2	Demolition, Sawcutting and Removals	
3	Maintenance & Protection of Traffic (incl. Temp. Striping and Signage for Phased Work)	
4	Temp. 6' H C.L.F. and Gates (w/ Driven Posts)	
5	Granite Stone Curbing	
6	Concrete Sidewalk and Curb Ramp	
7	Concrete Driveway Apron and Heavy Duty Pavement Section	
8	Concrete Median with Stamped Concrete and Integral Color	
9	18" W Brick Band (Stamped Concrete Sidewalk w/ Integral Color)	
10	Traffic Signs	
11	Epoxy Pavement Line Striping, Pavement Markings and Symbols	
12	Mill Ex. Asphalt Pavement	
13	Full Depth Pavement Section (Including P.A.B.)	
14	Bituminous Concrete Overlay	
15	Drainage Work: All Piping, Trenching, Catch Basins, Manholes, etc.	
16	Sanitary Sewer Work: All Piping Trenching, Manholes, By-pass Pumping, Reconnection to Existing Manhole, etc.	
17	Reset Ex. Valves, MH Frames, CBs and Traffic Boxes to New Grade	
18	Water Work: New Fire Hydrant Including Lateral and Valve(s)	
19	Electrical Work: New Light Poles, Luminaires, Foundations, etc.	
20	Traffic Signal Work: Modify Ex. Traffic Signal at Union Street	
21	Establish Lawn (Topsoil, Mulch and Seed)	
22	Addendum #2 – Electrical Revisions	
<b>Grand Total Lump Sum Base Bid Price</b>		



LOCATION MAP  
SCALE: 1" = 1,000'

REINSTALL LOOP DETECTORS (TYP.)

RESET EX. HANDHOLE AS NECESSARY TO MEET NEW GRADE (TYP. FOR ALL MANHOLES, CATCH BASINS, VALVE BOXES AND TRAFFIC STRUCTURES, ETC.)

INSTALL 60" CONC. HEX MANHOLE PER EVERSOURCE STDS.

CONNECT TO EX. GAS MAIN (BY OTHERS)

PROP. SAN. MH #3 (SEE DWG. 04)

INSTALL NEW HYDRANT AND VALVE PER CITY OF NEW LONDON REQUIREMENTS

INSTALL 2-4" PVC CONDUITS IN CONC. ENCASUREMENT. CONTRACTOR SHALL COORDINATE THEIR WORK WITH EVERSOURCE AS NECESSARY.

INSTALL NEW STORM MH AND REMOVE EX. 6" STORM  
TF = ±46.6  
INV. = ±40.9  
(SET AS LOW AS POSSIBLE)  
(ADD 6" Ø STUB ON EAST SIDE FOR FUTURE CANOPY ROOF DRAIN)

NEW YARD DRAIN AND 8" PVC STORM LINES BY GARDE ARTS CENTER

SEE DWG. 04 FOR NEW SAN. LINE TO BE INSTALLED

EXISTING GAS LINE TO BE RELOCATED BY EVERSOURCE

INSTALL NEW STORM MH #2 OVER EX. 18" R.C.P.  
TF = 45.6±  
INV. = 40.6 (V.I.F.)

CONNECT TO EXIST. WATER LINE AT NEAREST JOINT

PROP. SAN. MH #2 (PERFORM TEST PIT TO CONFIRM UTILITY CONFLICTS)

REMOVE EX. 6" STORM LINE AND INSTALL NEW STORM MANHOLE #1 OVER EX. 18" R.C.P.  
TF = 39.2± (V.I.F.)  
NEW 8" INV. = 34.2 (S)  
EX. 18" INV. = 34.0 (W)  
EX. 18" INV. = 33.9 (E)  
(VERIFY ALL INVERTS IN FIELD)

18 LF - 8" SCH. 40 PVC STORM, S = 0.022

STORM MH  
TF = 40.1±  
INV. = 34.6

LEAVE 8" PVC STUB ON SOUTH SIDE, INV. = 34.7

PROVIDE NEW STORM MH F&C AND RESET TO MEET FINISHED GRADE

INSTALL 2x3 CONC. ENCASED DUCTBANK

PROP. ELEV. 47.7±

REMOVE EX. LIGHT POLE AND FOUNDATION. PROVIDE NEW TRAFFIC-RATED MANHOLE AND SPLICE ANY REMAINING CONDUCTORS AS MAY BE NECESSARY

REMOVE EX. 6" LINE AND REPLACE WITH NEW 22 LF - 8" SCH. 40 PVC

INSTALL 2x2 CONC. ENCASED DUCTBANK

INSTALL TYPE 'C' CB OVER EX. 6" STORM  
TF = 38.7±  
INV. = 34.0± (V.I.F.)

NEW DRAINAGE LINE BY GARDE ARTS CENTER

REMOVE EX. LIGHT POLE AND FOUNDATION. PROVIDE NEW TRAFFIC-RATED JUNCTION BOX TO SPLICE ANY REMAINING CONDUCTORS AS MAY BE NECESSARY

REMOVE EX. TYPE 'C' TOP AND INSTALL NEW 24" Ø FRAME AND COVER. (WORK BY GARDE ARTS CENTER)

RESET EXISTING COVERS AS REQUIRED TO MEET NEW GRADE - TYP. FOR ALL

CONNECT TO EXISTING 10" VCP WITH 45" ELBOW AND FERNCO COUPLING AS REQUIRED BY CITY OF NEW LONDON DPW, EX. INV. = 28.7± (V.I.F.)

REMOVE EX. CATCH BASIN AND PIPING AND FILL VOID SPACE WITH NEW COMPACTED GRAVEL. RE-GRADE AREA AS NECESSARY TO AVOID PONDING.

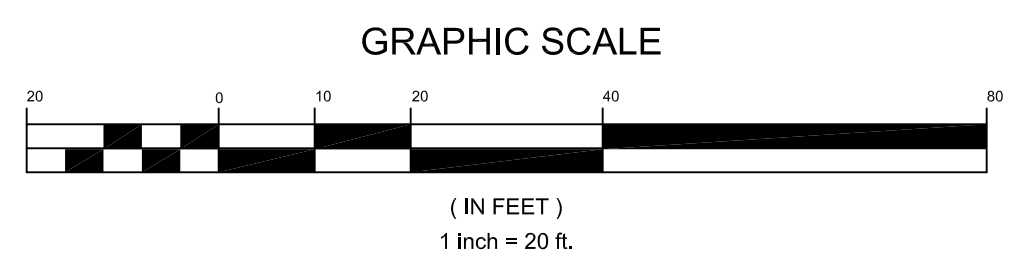
LIGHTING & ELECTRICAL NOTES

- A. The Contractor shall provide electrical, lighting and traffic signal design on a "Design-Build" basis using a qualified Professional Engineer licensed in the State of Connecticut who is familiar with such systems.
- B. The Design-Build subcontractor shall renovate, modify and add to the existing electrical lighting and traffic signal systems as required to accommodate the new site lighting as delineated in the Contract Drawings.
- C. All electrical devices, equipment and fixtures are shown for coordination purposes only and DO NOT imply any design of the system. The Design-Build subcontractor shall be responsible for verifying the quantity, spacing and final layout of all devices to ensure the final installation meets code prior to submitting a bid.
- D. All required modifications of and additions to the existing electric service, existing wiring and/or circuiting, shall be determined in the field by a qualified, Licensed Electrician specializing in those specific systems. The Design-Build subcontractor shall provide a full scope of design, qualified supervision, labor, materials and incidentals required for a complete installation conforming to the requirements herein.
- E. The Design-Build subcontractor shall be responsible for providing all necessary field verification, field measuring, design and documentation required for code review purposes, permitting, construction and installation.
- F. The Design-Build subcontractor shall also provide "As-Built" documentation of all new and modified systems at the end of the job. The Engineer will provide electronic copies of floor plans in the most current version of Autodesk AutoCAD format for the sub-contractors' use in preparing their own design documentation.

LEGEND AND ABBREVIATIONS

- PROPERTY LINE
- PROPERTY TAKING LINE
- S --- PROP. SANITARY LINE (W=WATER, G=GAS, E=ELEC.)
- L.O.W. LIMITS OF WORK
- GSC GRANITE STONE CURB
- MGSC MOUNTABLE GRANITE STONE CURB
- HDPE HIGH DENSITY POLYETHYLENE
- V.I.F. VERIFY IN FIELD
- GTD GRADE TO DRAIN
- TF TOP OF FRAME
- INV. INVERT
- TC TOP OF CURB
- BC BOTTOM OF CURB
- GRADE TO DRAIN
- PROPOSED CATCH BASIN
- SYL / SWL SINGLE YELLOW/WHITE LINE
- SD SEWER MANHOLE (D=DRAIN MH)
- TS TRAFFIC SIGN

NO.	DESCRIPTION	DATE
ADDENDUM #2 - ADD ELECTRIC MANHOLE ETC.		2/27/2024
REVISIONS		



ENGINEERING CONSULTANT:

APPROVED BY:

MR. BRIAN SEAR  
DIRECTOR OF PUBLIC WORKS

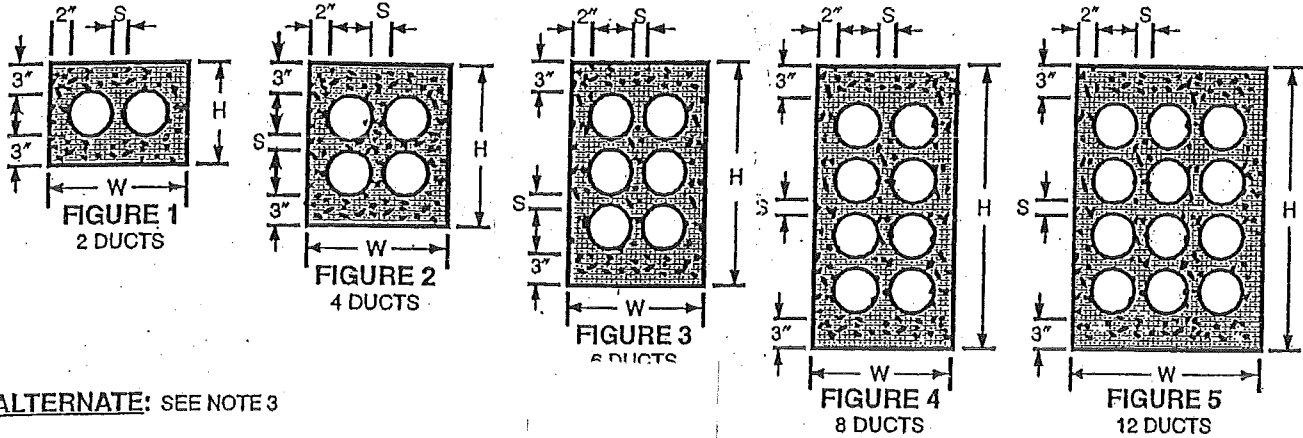
GOVERNOR WINTHROP BOULEVARD  
ROADWAY IMPROVEMENT PROJECT  
HUNTINGTON AVENUE (S.R. 641) TO UNION STREET  
DEPARTMENT OF PUBLIC WORKS  
NEW LONDON, CONNECTICUT

DESIGNED CAD  
DRAWN CAD  
CHECKED CAD  
SCALE 1"=20'-0"  
DATE 11-28-2023

DRAWING NO. 02  
JOB NO. 23.06  
CONTRACT NO. \_\_\_\_\_  
SHEET 2 OF 8 SHEETS

DEPARTMENT OF PUBLIC WORKS  
GRADING & UTILITY PLAN  
CITY OF NEW LONDON

**PREFERRED:**



**ALTERNATE: SEE NOTE 3**

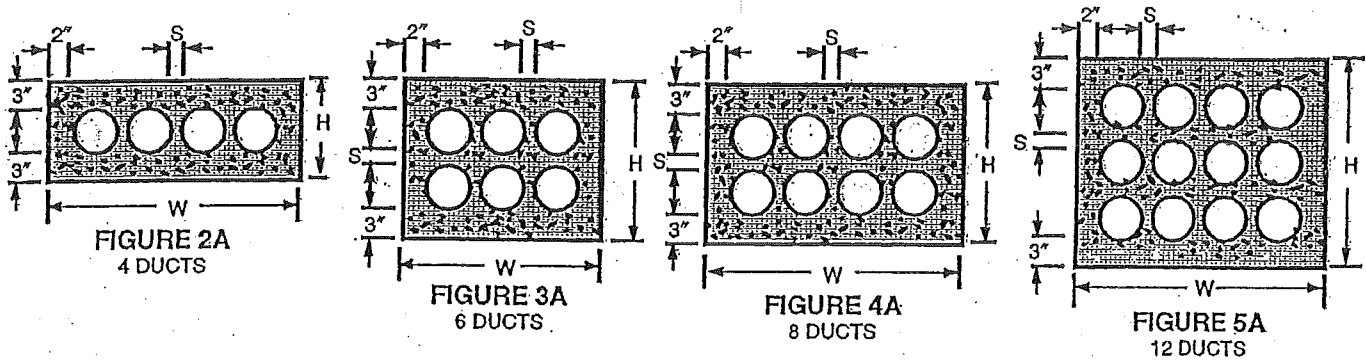
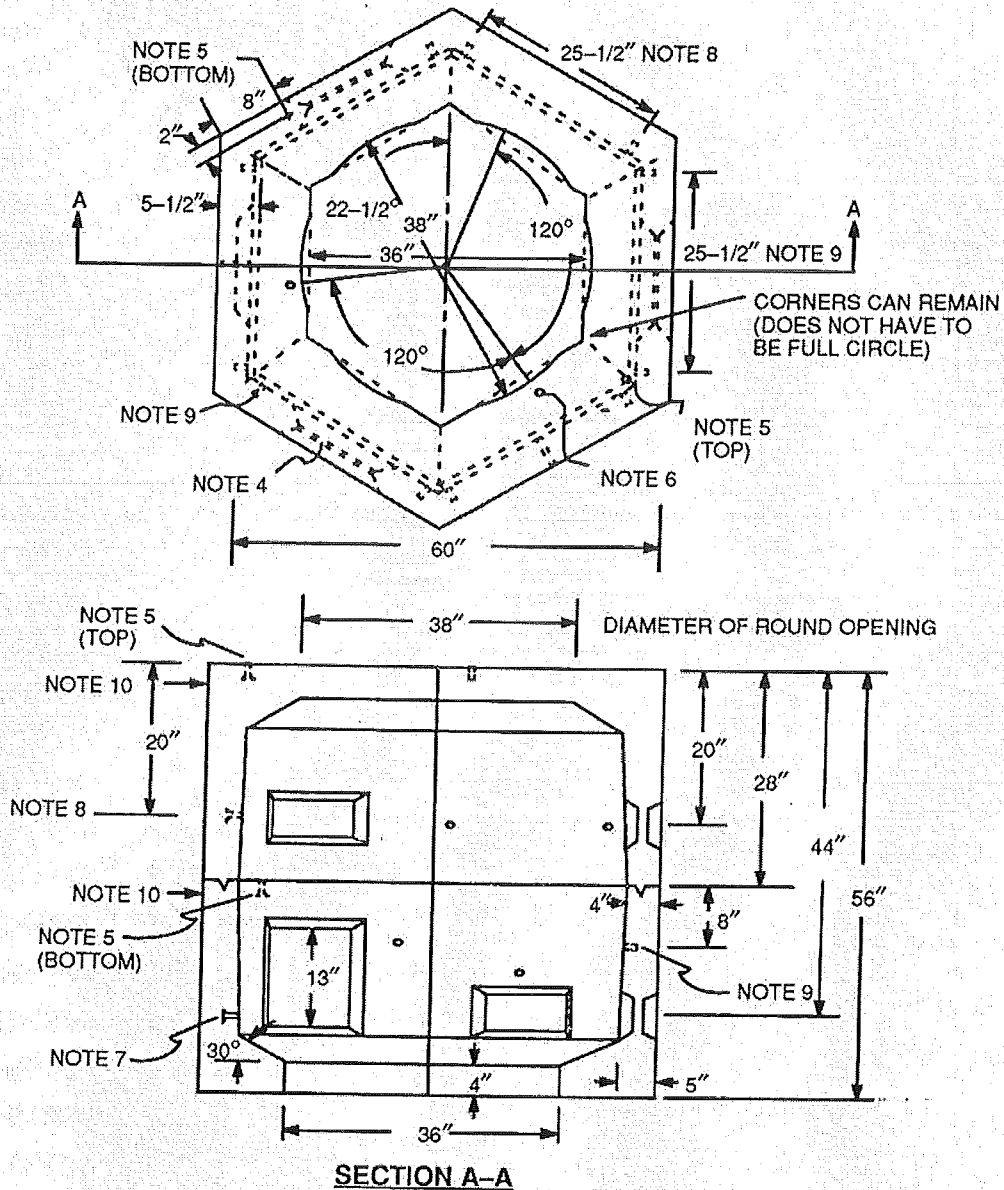


Fig	Dimensions in Inches								
	4" Duct			5" Duct			6" Duct		
	W	H	S	W	H	S	W	H	S
1	14-1/2	10-1/2	1-1/2	16-1/2	11-1/2	1-1/2	19	12-1/2	2
2	14-1/2	16-1/2	1-1/2	16-1/2	18-1/2	1-1/2	19	21	2
2A	26-1/2	10-1/2	1-1/2	30-1/2	11-1/2	1-1/2	36	12-1/2	2
3	14-1/2	22-1/2	1-1/2	16-1/2	25-1/2	1-1/2	19	29-1/2	2
3A	20-1/2	16-1/2	1-1/2	23-1/2	18-1/2	1-1/2	27-1/2	21	2
4	14-1/2	28-1/2	1-1/2	16-1/2	32-1/2	1-1/2	19	38	2
4A	26-1/2	16-1/2	1-1/2	30-1/2	18-1/2	1-1/2	36	21	2
5	20-1/2	28-1/2	1-1/2	23-1/2	32-1/2	1-1/2	27-1/2	38	2
5A	26-1/2	22-1/2	1-1/2	30-1/2	25-1/2	1-1/2	36	29-1/2	2

**Notes**

- At manholes conduit banks shall be per Figures 1, 2, 3, 4, or 5.
- Minimum cover from top of a conduit bank to the pavement or earth surface shall be:
  - State highways - 36 inches
  - Railroad tracks - 60 inches
  - All other areas - 24 inches
- In the conduit run between manholes if obstructions are encountered or to reduce trench depth, Figures 2A, 3A, 4A, or 5A are permissible.
- Concrete shall be 2500 psi, 1/2 inch maximum stone, 6-9 inches slump of such consistency that spading will ensure the flow of concrete between and under the individual ducts, but not so wet as to float the ducts. For tier buildup construction a stiffer consistency should be used.

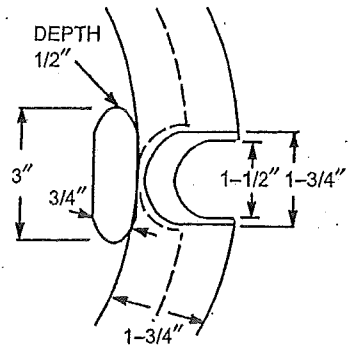
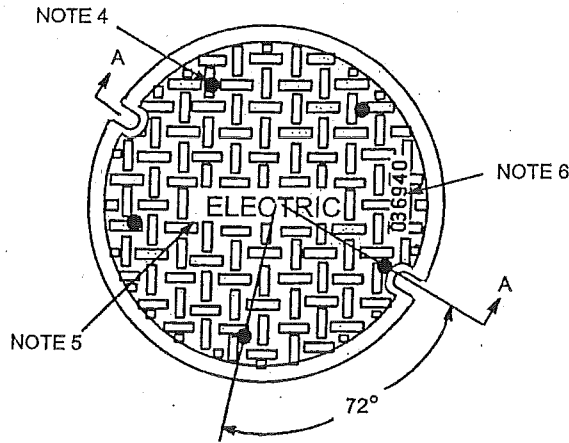
ORIGINAL	<b>CONDUIT BANK CONSTRUCTION</b>			
5/29/75				
APPROVED				
5/28/97				
NORTHEAST UTILITIES	DESIGN & APPLICATION STANDARD	DTR 73.209	4	



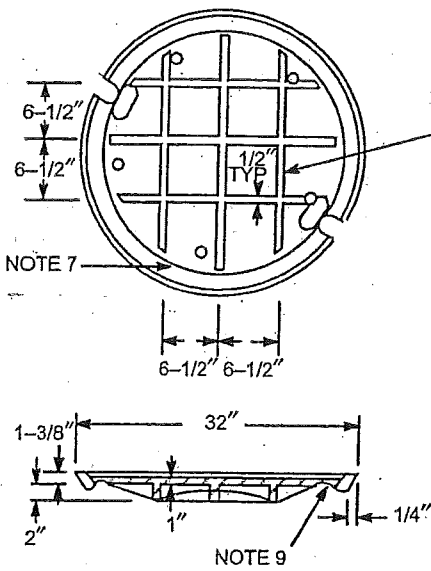
**NOTES**

1. Design loading shall be in accordance with AASHTO HS20-1983.
2. Concrete and concrete design shall be in accordance with ACI 318-1986.
3. Concrete shall have a minimum 28 day strength of 4000 psi and a maximum 28 day strength of 5000 psi.
4. Five inch x 12 inch knockouts, (3) in the top, (3) in the bottom and (1) 12 inch x 13 inch knockout in the bottom shall be clear of reinforcement.
5. 3/4 inch - coil loop inserts - 6 inch - (Dayton B-16) with insert locator plug (Dayton T-21). Two each in top and bottom sections for lifting with swivel plate. Inserts are to be secured in place with rebar.
6. Zinc alloy inserts 5/8 inch - 11 x 1-1/2 inches for extension (3) on 41 inch bolt circle.
7. Zinc alloy inserts 3/4 inch - 10 x 3 inches for cable pulling (4) opposite knockouts in bottom section.
8. Zinc alloy inserts 1/2 inch - 13 x 1-1/2 inches (6) for mounting junction connectors.
9. Zinc alloy inserts 3/8 inch - 16 x 1-1/2 inches (6) for supporting ground bus.
10. Manufacturer's identification and month/year when manufactured shall be legibly marked in/on concrete on the outside upper part.

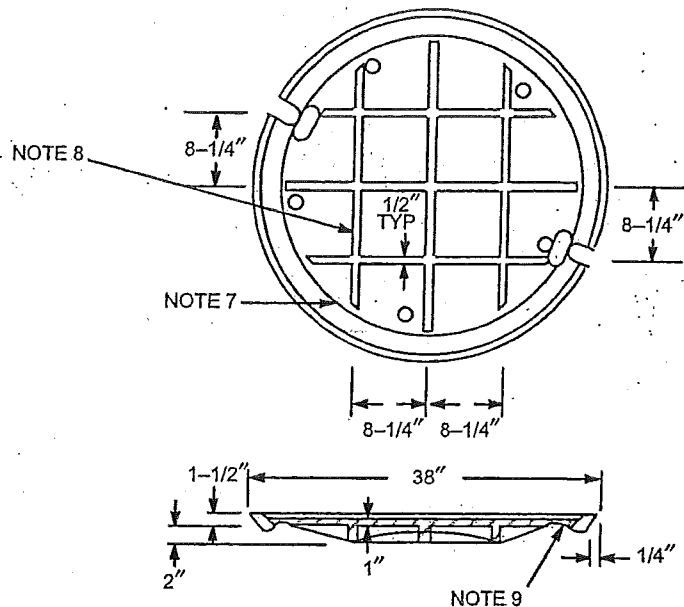
ORIGINAL	<b>HANDHOLE - HEXAGONAL - PRECAST CONCRETE</b>			
10/3/75				
APPROVED	<b>60" WIDE X 56" HIGH OUTSIDE</b>			
12/13/90	NORTHEAST UTILITIES	MATERIAL SPECIFICATION	SPC H-019	8
F.S.				



PICK HOLE AND LIFTING NOTCH DETAIL



SECTION A-A



SECTION A-A

Notes

1. The gray cast iron shall conform to ASTM A48-1983 Class 30-B.
2. Design loading shall be in accordance with AASHTO HS20-1983.
3. Bearing surfaces of cover shall be machine finished with tolerance of 1/16 inch +0 inches.
4. Five 1-1/4-inch diameter holes, 5 inches from edge and 72 degrees apart.
5. "ELECTRIC" letters 2-1/2 inches high.
6. NU stock code shall be cast in cover between pick holes, 32 inch SC 0174820, 38 inch SC 0174821.
7. Foundry name or insignia and date (year when manufactured) shall be cast in the underside of cover.
8. Ribs to be tapered from 1/2 inch to 3/4 inch.
9. Lifting notch adjacent to each pick hole.
10. The 32-inch cover fits into the 30-inch frame. The 38-inch cover fits into the 36-inch frame. Weight of 32-inch cover approximately 265 pounds and 38-inch cover approximately 365 pounds.

ORIGINAL	<b>COVERS - MANHOLE - CAST IRON</b>			
7/27/75				
APPROVED	<b>32" AND 38" DIAMETER</b>			
3/1/97	NORTHEAST UTILITIES	MATERIAL SPECIFICATION	SPC C-709	8