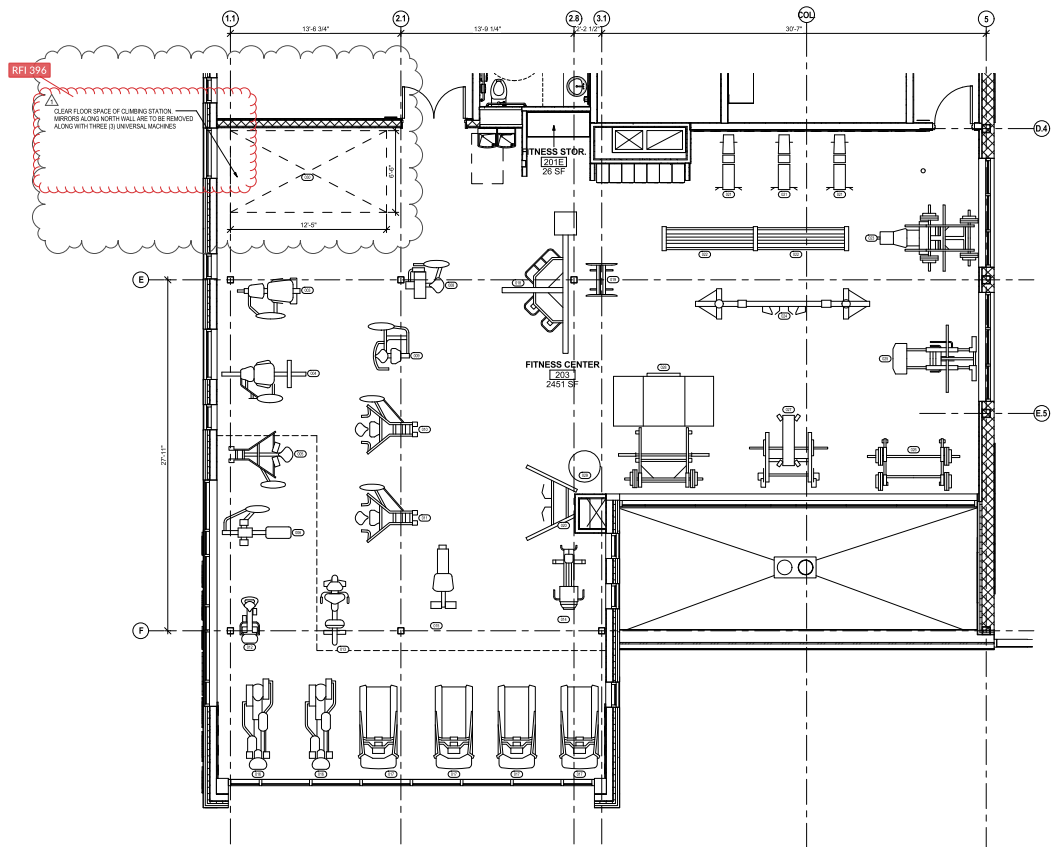


TO BE USED AS AN EXAMPLE ONLY

| # | DESCRIPTION | MANUF |
|-----|---|---------------|
| 001 | 21040 PRESTIGE VRS LEG PRESS | CYBEX |
| 002 | 21060 PRESTIGE VRS SEATED LEG CURL | CYBEX |
| 003 | 21020 PRESTIGE VRS LEG EXTENSION | CYBEX |
| 004 | 21180 VRS1 DUALS HIP ADDUCTION / ADDUCTION | CYBEX |
| 005 | 21020 PRESTIGE VRS PULLDOWN | CYBEX |
| 006 | 21030 PRESTIGE VRS ROW | CYBEX |
| 007 | 21110 PRESTIGE VRS FLY REAR DELT | CYBEX |
| 008 | 21170 PRESTIGE VRS GLUTE | CYBEX |
| 009 | 21080 PRESTIGE VRS ARM EXTENSION | CYBEX |
| 010 | 21000 PRESTIGE VRS CHEST PRESS | CYBEX |
| 011 | 21010 PRESTIGE VRS OVERHEAD PRESS | CYBEX |
| 012 | 7700 UPRIGHT BIKE | CYBEX |
| 013 | 7700 RECLUMBENT BIKE | CYBEX |
| 014 | RCW OX TRAINER | LIFE FITNESS |
| 015 | PRO103 PRO1 UPPER BODY | SCIFIT |
| 016 | 770AT ARC TRAINER | CYBEX |
| 017 | 7701 TRX ADVICE | CYBEX |
| 018 | SYNRGY 360T VERSA DAP | CYBEX |
| 019 | SCUD SIGNATURE SERIES CHIN / DIP / LEG RAISE | LIFE FITNESS |
| 020 | BRAYO COMPACT 6000 | CYBEX |
| 021 | FWMAB HAMMER STRENGTH ADJUSTABLE BENCH | LIFE FITNESS |
| 022 | FIX DRZ HAMMER STRENGTH 2-TIER DUMBBELL RACK | LIFE FITNESS |
| 023 | HSLP HAMMER STRENGTH PLATE-LOADED LINEAR LEG PRESS | LIFE FITNESS |
| 024 | CMACO SIGNATURE SERIES ADJUSTABLE CABLE CROSSOVER | LIFE FITNESS |
| 025 | FLHP HAMMER STRENGTH PLATE-LOADED LINEAR HACK PRESS | LIFE FITNESS |
| 026 | HSSN HAMMER STRENGTH SMITH MACHINE | LIFE FITNESS |
| 027 | HAMMER A&L BENCH | LIFE FITNESS |
| 028 | HSLR HAMMER STRENGTH HD ELITE HALF RACK | LIFE FITNESS |
| 029 | STABILITY BALL RACK | LIFE FITNESS |
| 030 | CLIMBING STATION (MOTORIZED) | CLIMB STATION |



1 FITNESS CENTER EQUIPMENT PLAN
1/4" = 1'-0"



GENERAL NOTES

1. EXERCISE EQUIPMENT PROVIDED AND INSTALLED BY OWNER.

| # | DATE | CHANGE DESCRIPTION |
|---|------------|--|
| 1 | 08/15/2016 | ASI 022 - OWNER REQUESTED CLIMBING STATION |

| | |
|---|--|
| Deg. Coord.: Author Tech. Coord.: Checker 15065 | A903 FITNESS EQUIPMENT SCHEDULE STAIR ACCENT WALL - SOUTH 04/11/18 |
|---|--|