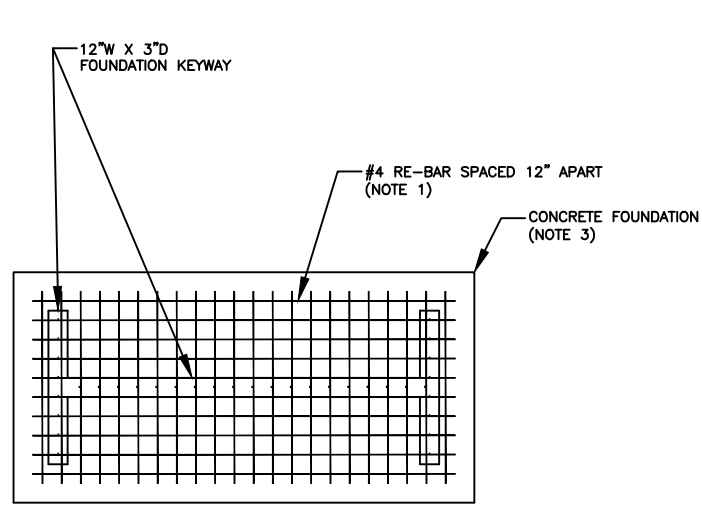
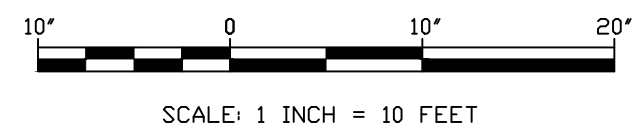
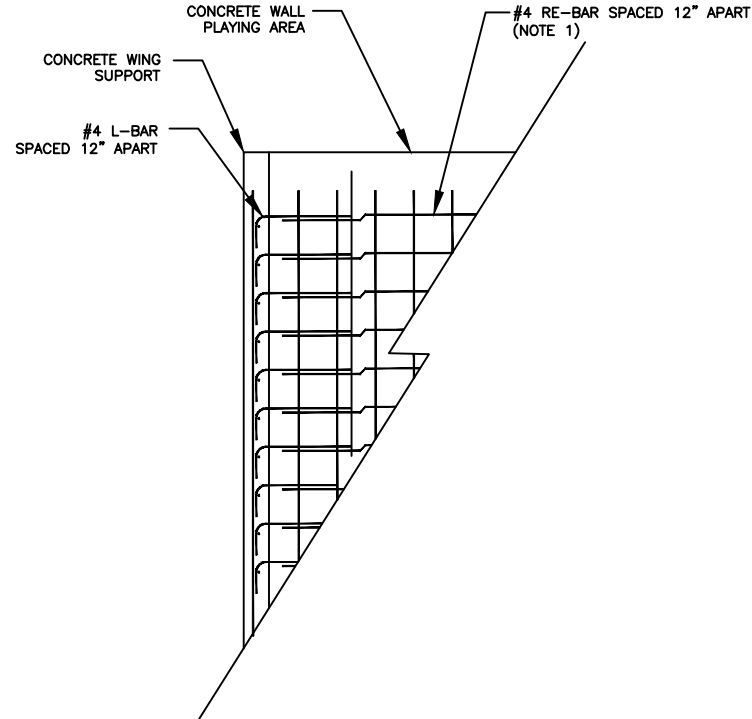


CITY OF NEW LONDON
PUBLIC WORKS DEPARTMENT
ENGINEERING
111 UNION ST.
NEW LONDON, CT 06320
Ph: 860-447-5250 FAX: 860-447-5255

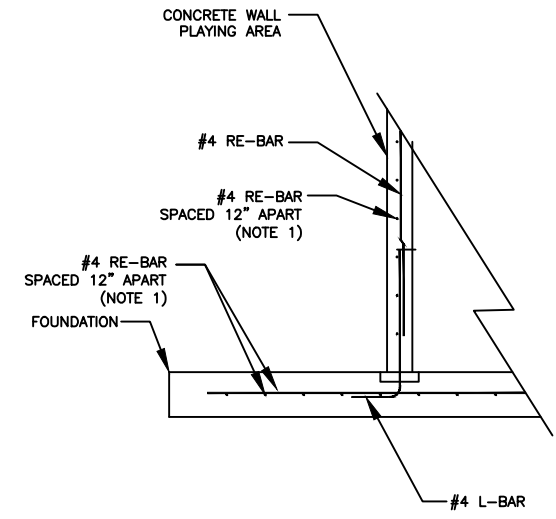
HANDBALL COURT
AT TOBY MAY PARK
RE-BAR LOCATIONS



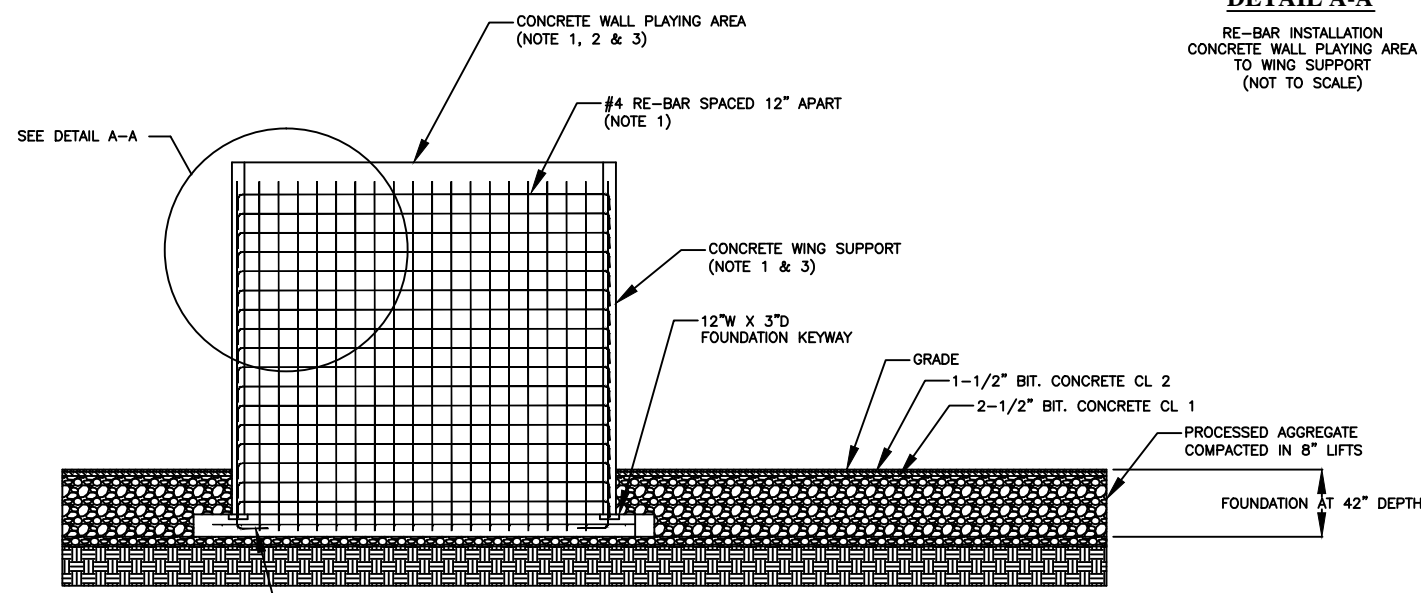
FOUNDATION VIEW



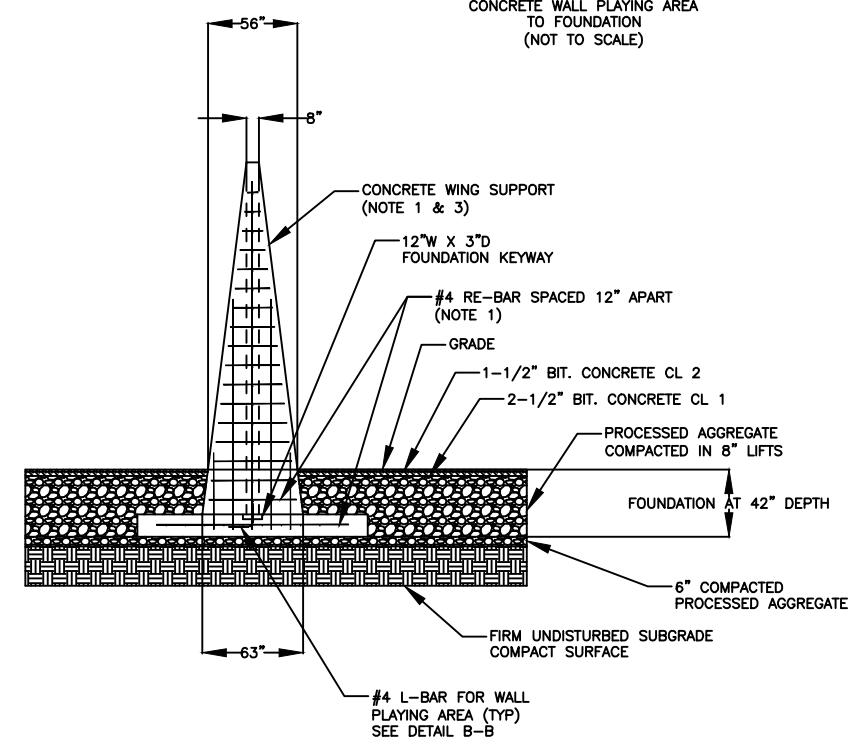
DETAIL A-A
RE-BAR INSTALLATION
CONCRETE WALL PLAYING AREA
TO WING SUPPORT
(NOT TO SCALE)



DETAIL B-B
RE-BAR INSTALLATION
CONCRETE WALL PLAYING AREA
TO FOUNDATION
(NOT TO SCALE)



FRONT VIEW



SIDE VIEW

PROPOSED HANDBALL COURT
AT TOBY MAY PARK
RE-BAR LOCATIONS

DRAFT 3/7/17
NOT ISSUED FOR CONSTRUCTION

REVISIONS		DESCRIPTION	DATE	APPROVED BY:	DATE:
NO.	BY				

DRAWN BY: TJQ APPROVED BY: DATE: 03.07.2017